

Welfaremeter Expert System

A new system to MEASURE, ASSESS and ADVICE on fish pens

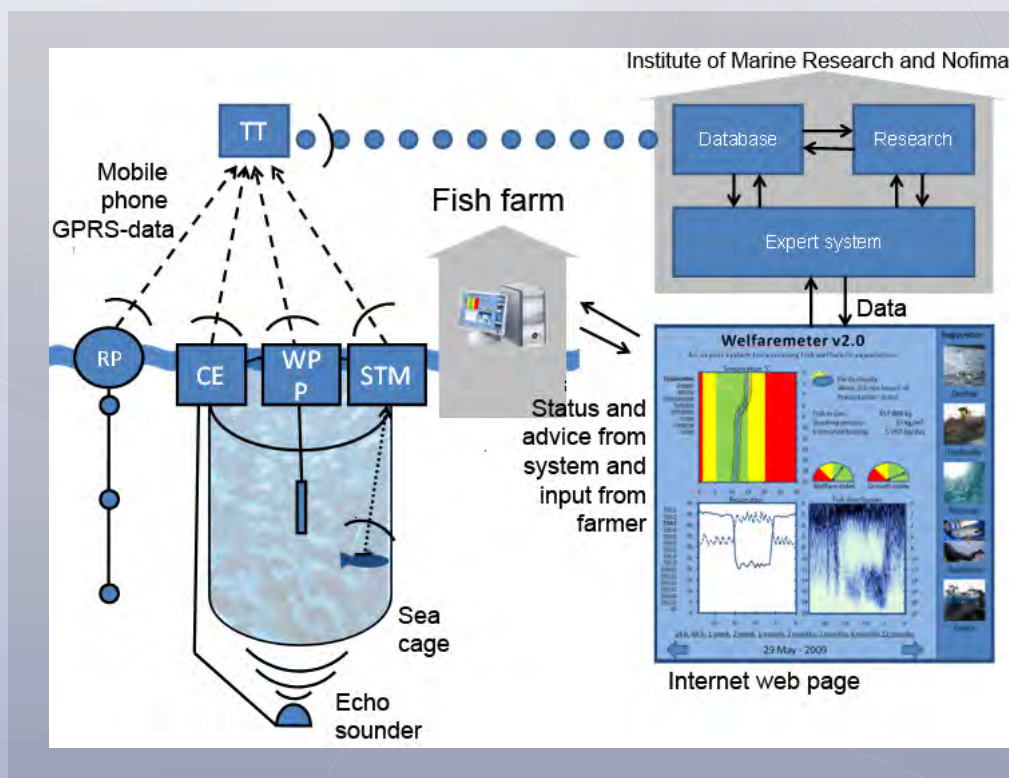
The expert system is a combined monitoring and alert system that provides real-time updates of the environmental conditions in the fish pens. It assesses if the environment, prosperity and welfare of the farmed fish satisfy today's requirements for animal welfare.

The Welfaremeter contains a complete solution including profiling probe/sensor, buoy and a webservice for perspicuous monitoring.

The Welfaremeter is developed by researchers at the Institute of Marine Research and others.

ADVANTAGES

- Extensively monitoring of a fish pen environmental conditions
- Immediate updates of the conditions on customer interface
- Evaluation and benchmarking of data
- Expert advice and recommendations to users
- Easy access and clearly presented data





Welfaremeter – Survey

Data from the Welfaremeter profiling probe and reference probe are instantly available for viewing on an easy to use and intuitive internet application. This application shows graphs both of the latest measurements and also historical data. Each pen/fish farm gets a homepage with a secure log-on for online monitoring.

Welfaremeter – Aquaculture

In addition to Welfaremeter – Survey, the Aquaculture version also includes classification of environmental conditions in relation optimal salmon production and welfare. When new data are collected from the probe(s) it is immediately analyzed by expert software and classified as good, fair or potentially harmful to the fish. The expert software also calculates a welfare index from 0 (terrible welfare) to 100 (excellent welfare). This index is based on measured environmental conditions and modeling of metabolic scope (the fish's capacity to extract oxygen beyond its basic needs from the water).

Certificate

The Welfaremeter provides a certificate, giving a complete overview of the environment in the sea cage during production which can be linked to mortality, disease outbreak and feeding. If echo sounder is implemented to Welfaremeter, the system also gives an overview and evaluation of fish behavior.

Becoming part of climate and coast surveillance

Your data are stored in the database at the Norwegian Marine Data Centre. They are intended for confidential use only by the customer. However, if you give the institute of Marine Research permission use your data, you will get a discount.

INTERESTED IN THIS TECHNOLOGY?

The technology is developed by the Institute of Marine Research. Please contact BTO for further

DAG FINNE- BUSINESS DEVELOPMENT MANAGER, BTO AS

Ph: +47 55 58 30 57

Mob: +47 920 16 360

email: dag.finne@bergento.no

www.bergento.no

BTO is the technology transfer office in Bergen, supporting 8 research institutions in commercialization and technology transfer. Together these institutions employ more than 2800 researchers and have an research base of more than 3MrdNOK (billions). The researchers are involved in a broad range of exciting projects. Researchers, faculty and students from these institutions provide BTO with about 100 new innovative ideas and technologies each year. BTO's goal is to help researchers commercialise their research results to ensure that knowledge and inventions benefit individuals, society and industry.



GUIDING GOOD IDEAS