



# Læringsdagen MatNat 23.5.2019

Tore Linde/Erling Langøigjelten, IT-avdelingen





# Agenda

- Challenges
- Process
- Solutions
- Progress
- Demos





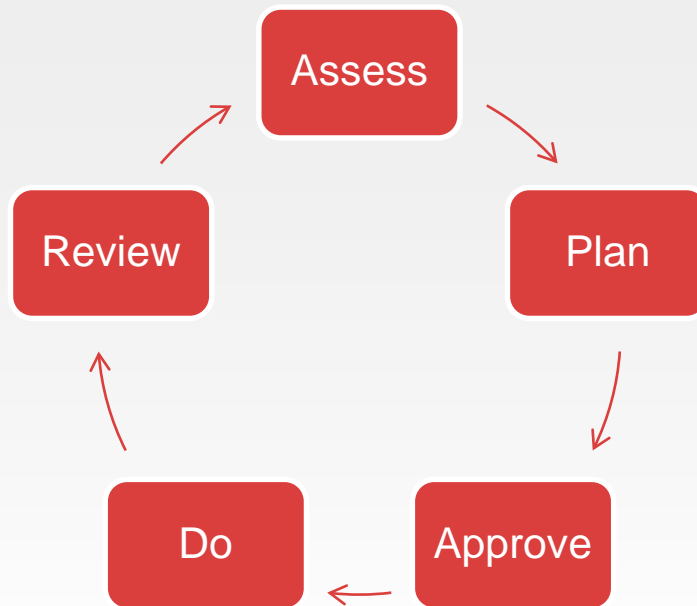
# Typical challenges

- Old equipment
  - No upgrade/patching
- Multi-user
- Shared passwords
- Local storage/no backup
- External access





# Process





# Solutions

- Assess
  - Scripts
    - Collect configuration for each lab computer
- Plan
  - Present a plan
  - Receive approval





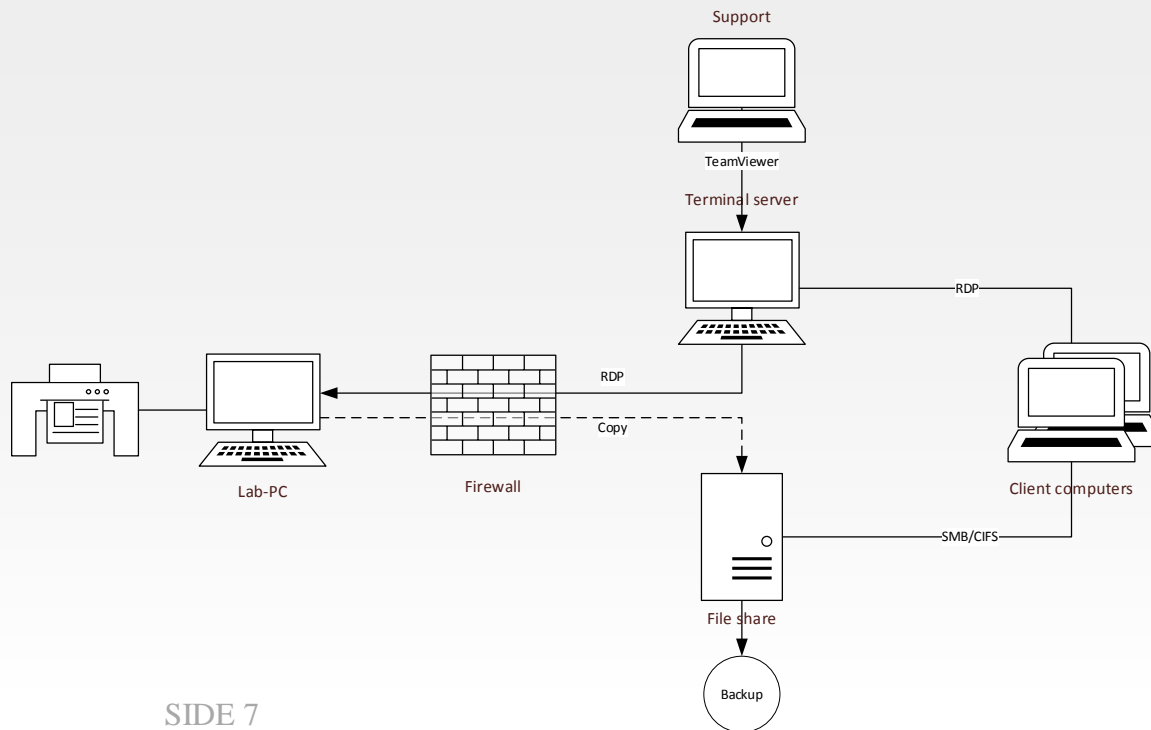
# Solutions

- Do
  - Reconfigure network
  - Password set for local user (mandatory)
  - Share folder containing raw data
  - Create local user with read-only access to data share





# Solution





# Solutions

- Network
  - One VLAN per research group
  - Dedicated firewall rules
  - Additional rules created based on requests







# Solutions

- Dedicated terminal server
  - Access from UiB network using remote desktop
  - Access for suppliers using TeamViewer





# Solutions

- Self service
  - Lab manager grants UiB users access to lab computers and central storage (read-only or read/write)
  - Via [portal.uib.no](https://portal.uib.no)





# Solutions

- Central storage/copying
  - Dedicated, tailored job copying new data to central storage (1TB included)
  - Schedule set by research group
  - Accessible from UiB-network to relevant users
  - Standard backup routines





# Solutions

- Billy for high volume data storage
- Tape based (looks like a file system)
- 50 TB minimum
- Not suitable for small files, these must be zipped before transferred





# Progress MatNat

- 10.83.101.0/24 - # RF\_GEO\_EARTHLAB
- 10.83.102.0/24 - # RF\_GEO\_EARTHLAB\_CT
- 10.83.103.0/24 - # RF\_GEO\_ELM
- 10.83.104.0/24 - # RF\_GEO\_FARLAB
- 10.83.105.0/24 - # RF\_GEO\_GC\_MS
- 10.83.106.0/24 - # RF\_GEO\_ICP
- 10.83.107.0/24 - # RF\_GEO\_RAMAN
- 10.83.108.0/24 - # RF\_GEO\_SEISMIKK
- 10.83.109.0/24 - # RF\_GEO\_CORESCANNER
- # RF\_KJ\_MS
- # RF\_KJ\_IR
- # RF\_KJ\_NMR
- # RF\_KJ\_KROMATOGRAFI\_1
- # RF\_KJ\_KROMATOGRAFI\_2





# Solutions

# DEMO





# Windows 10 (pilot)

Windows 10 UiB setup with automatic login of a shared user for each research group.

- Remote access to control lab-computer (via web portal)
- Access for suppliers using Teamviewer Quick Support.
- Self service administration
  - Control admin rights on lab-computer
  - Control remote access
  - Up to 35 day delay on patching controlled by users





# Windows 10 (pilot)

# DEMO







---

UNIVERSITETET I BERGEN