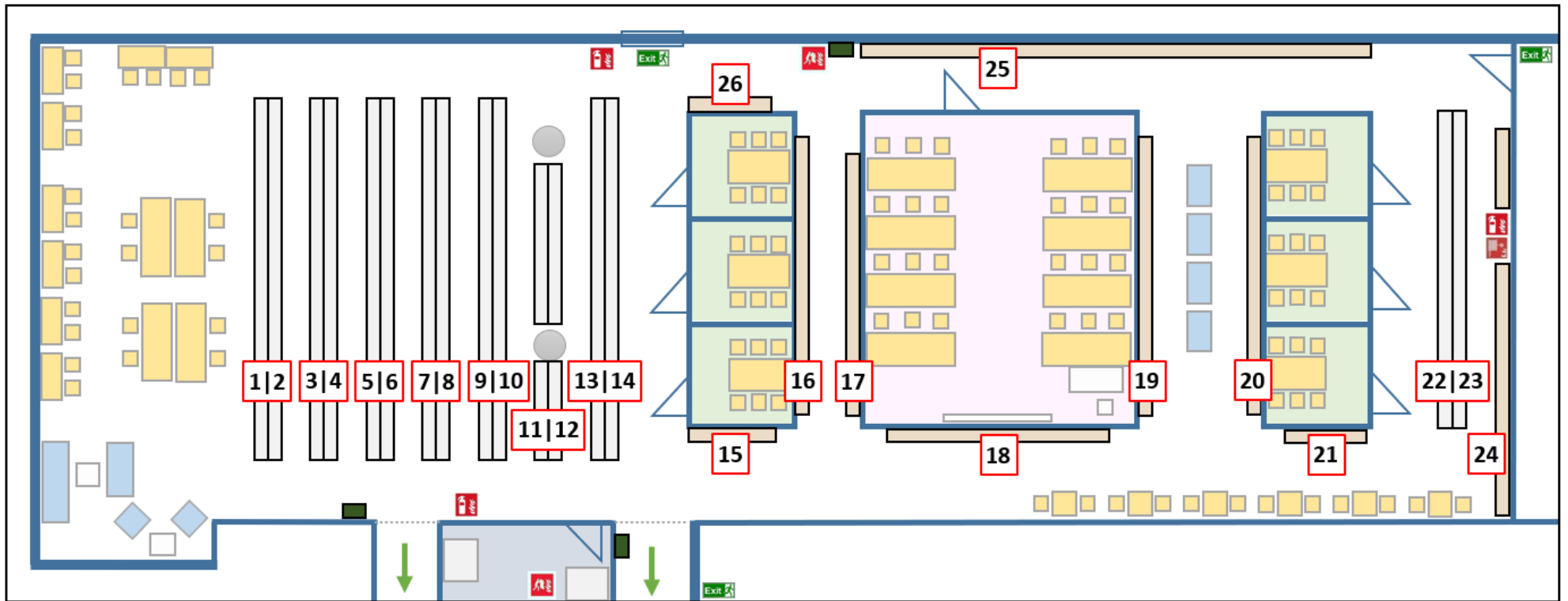


Bibliotek for medisin - hylleoversikt

Medical Library - shelflist



- Kursrom - course room
- Grupperom - group room
- Kopirom - copy room
- Arbeidsplass - study place
- Sitteplass - seat
- til skrankeområdet, utgang, utlånsautomat
to the circulation desk, exit, self-service machine
- Gitterport - lattice port
- Exit Nødutgang - Emergency exit
- 🔥 Brannteppe - Fire blanket
- 🧯 Brannslukningsapparat - Fire extinguisher
- 🚒 Brannslange - Fire hose
- ♻️ Avfallsbeholder - Waste container

Hylleinndeling - shelf sections

Hylle Shelf	Kode Code	Kategori Category	Hylle Shelf	Kode Code	Kategori Category
1	B	Philosophy	5	WD	Disorders of Systemic, Metabolic or Environmental Origin, etc.
1	GN	Anthropology	5	WE	Musculoskeletal System
1	H	Social Sciences	6	WF	Respiratory System
1	L	Education	6	WG	Cardiovascular System
1	P	Language and literature	6	WH	Hemic and Lymphatic Systems
1	Q	Science	6	WI	Digestive System
1		Index medicus	6	WJ	Urogenital System
2	QA	Mathematics	6	WK	Endocrine System
2	QH	General Biology	6	WL	Nervous System
2	QS	Human Anatomy	6 - 7	WM	Psychiatry
2 - 3	QT	Physiology	7	WN	Radiology. Diagnostic Imaging
3	QU	Biochemistry. Cell Biology and Genetics	7	WO	Surgery
3	QV	Pharmacology	7	WP	Gynecology
3	QW	Microbiology and Immunology	7	WQ	Obstetrics
3	QX	Parasitology	7	WR	Dermatology
3	QY	Clinical Laboratory Pathology	7	WS	Pediatrics
3	QZ	Pathology	7	WT	Geriatrics. Chronic Disease
4	SB	Plant culture	8	WU	Dentistry. Oral Surgery
4	SF	Animal Culture	9	WV	Otolaryngology
4	T	Technology	9	WW	Ophthalmology
4	V	Naval Science	9	WX	Hospitals and Other Health Facilities
4	W	Health Professions	9	WY	Nursing
4	WA	Public Health	9	WZ	History of Medicine. Medical Miscellany
5	WB	Practice of Medicine	9	Z	Bibliography / Library Science
5	WC	Communicable Diseases			

Bibliotek for medisin - hylleoversikt

Medical Library - shelflist

Hylle Shelf	Tidsskrifttittel (begynner med ...) <i>Journal title (starts with ...)</i>	Hylle Shelf	Tidsskrifttittel (begynner med ...) <i>Journal title (starts with ...)</i>
10	Acp – Ame	19	Jou – Lym
11	Ame – Can	20	Läk – New
12	Can – Deu	21	New – Nor
13	(Intern bruk / <i>internal use</i>)	22	(Intern bruk / <i>internal use</i>)
14	(Intern bruk / <i>internal use</i>)	23	(Intern bruk / <i>internal use</i>)
15	Dev – Eur	24	Nor – Sur
16	Eur – Høg	25	Swe – Øye
17	Inc – Jou	26	Studentoppgaver / <i>Student theses</i>
18	Jou		