

N

Utgang
1. etasje

Allégaten

1.samlingsplass

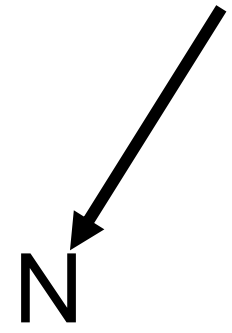
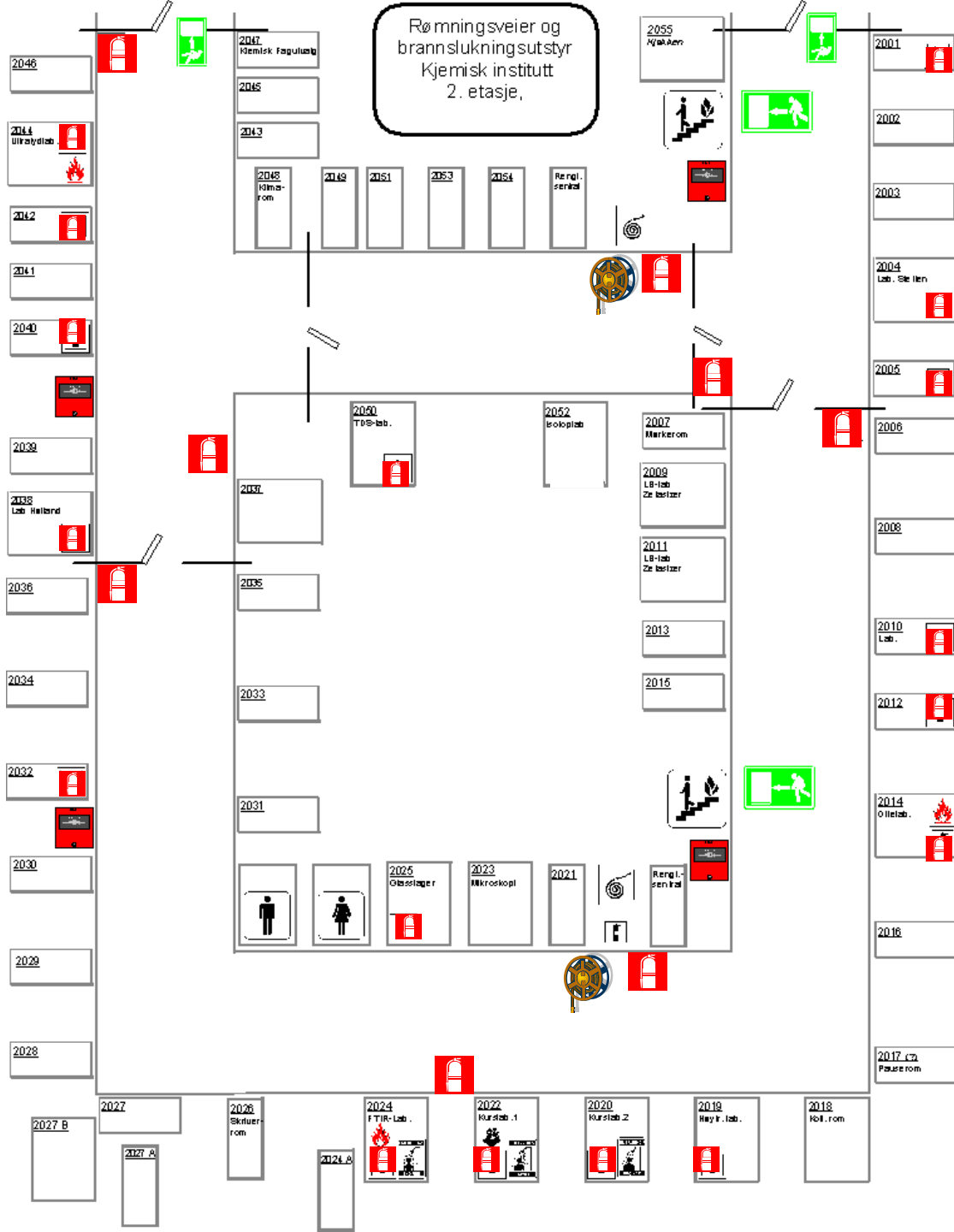
Allégt. 66
2. sam. p.



= Midlertidig
1. Evakueringsvei
pga stengt park



= 2. evakueringsvei



Dersom du oppdager en brann skal du:

-Varsle brannvesenet på **telefon 110** og opplyse om:

Hvem som ringer

Hva som har skjedd

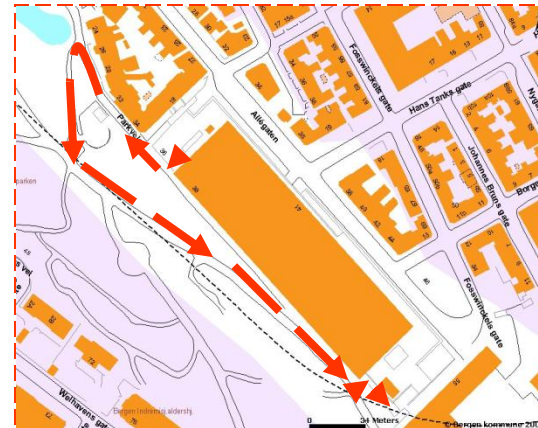
Hvor det brenner



• **Forsøk å slokke** uten å utsette deg selv eller andre for fare.

• **Utløse brannalarmen** manuelt, dersom alarmen ikke allerede er startet automatisk.

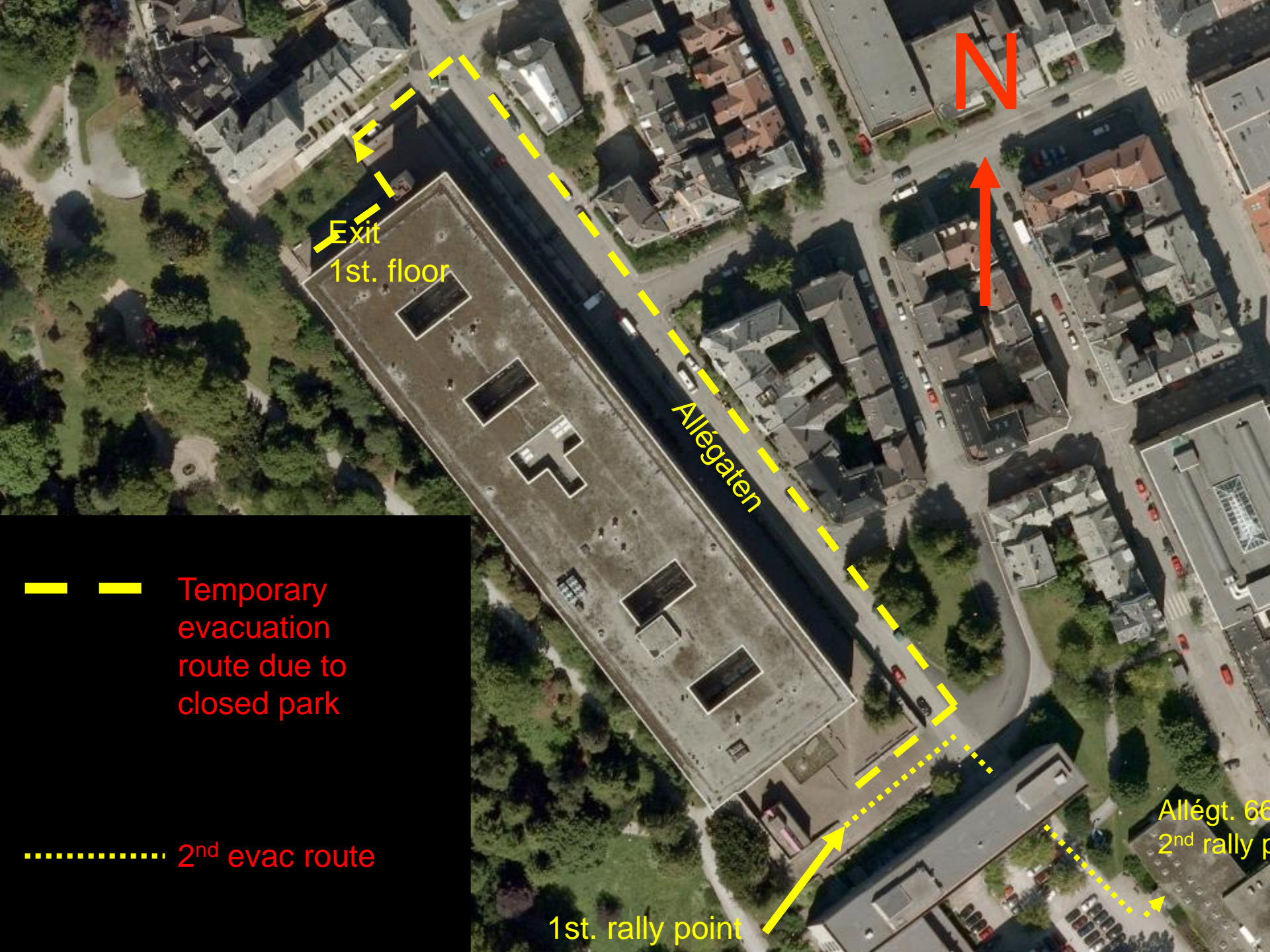
• **Evakuer!**



Evakueringsplan

- Evakuer straks alarmeren går
- Lukk vinduer og dører
- Bruk nærmeste rømningsvei
- Gå til samlingsplass.
- Allégt. 66 er samlingsplass ved langvarig evakuering





Temporary evacuation route due to closed park

2nd evac route

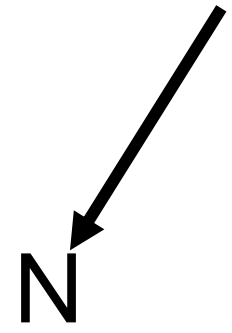
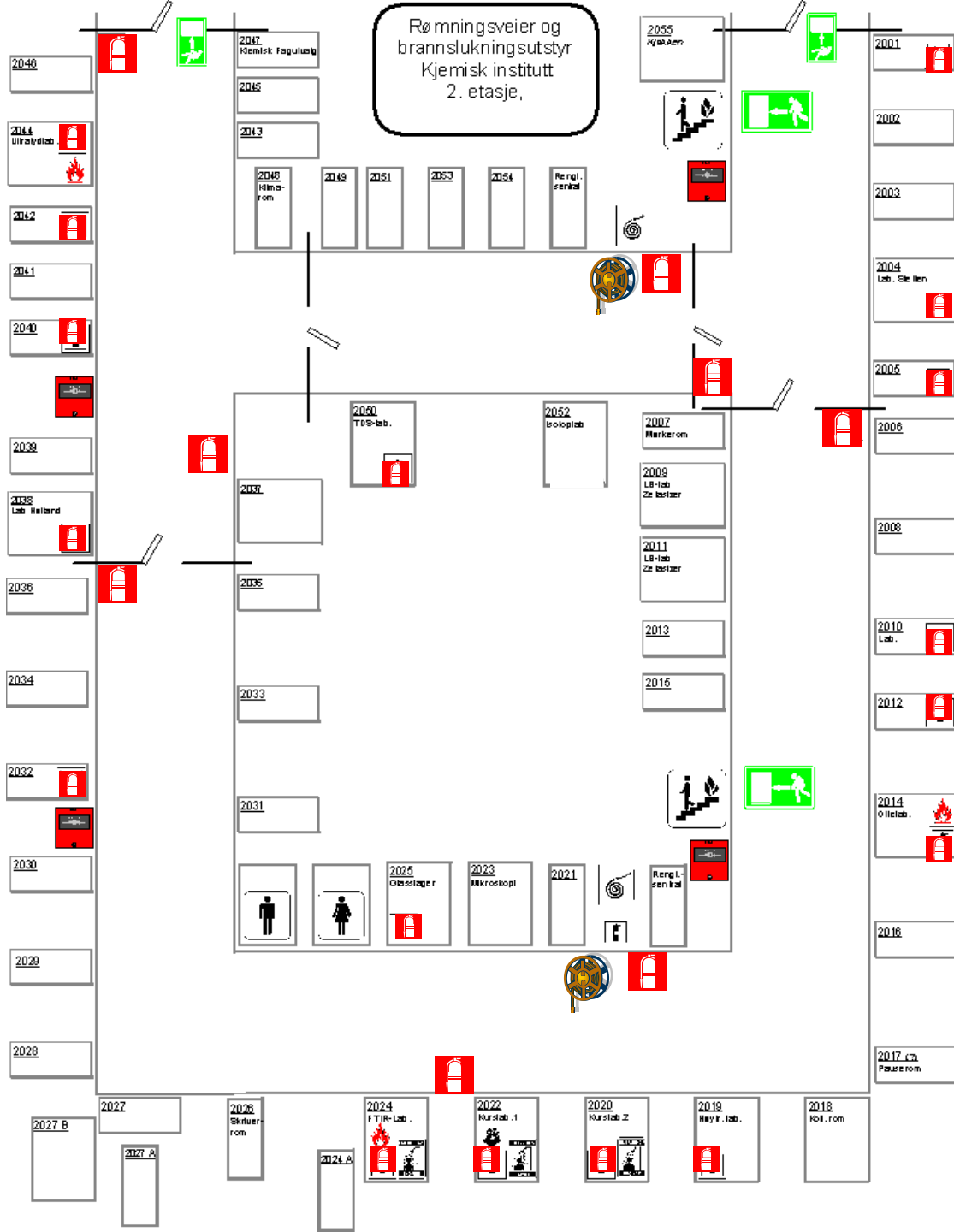
Exit 1st. floor

Allegaten

N

1st. rally point

Allégt. 66
2nd rally point



If **you** discover a fire do the following;

- Call fire department on phone (0)110 and inform about;

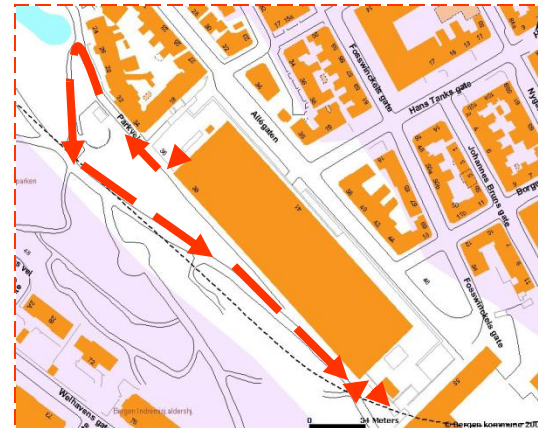
Who is calling

What has happened

Where is the scene of the fire



- Make an attempt of fire fighting using available fire-fighting equipment
- Trigger of fire alarm manually, if the alarm has not started automatically.
- Evacuate!



Plan of evacuation

- Evacuate immediately the alarm is heard
- Close windows and doors
- Use nearest exit
- Meet at rally point
- Allégt. 66 will be used for long-lasting evacuation

