

Utgang
1. etasje

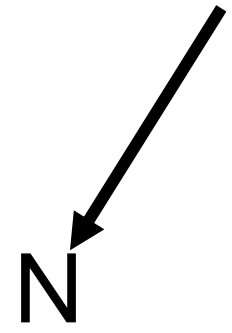
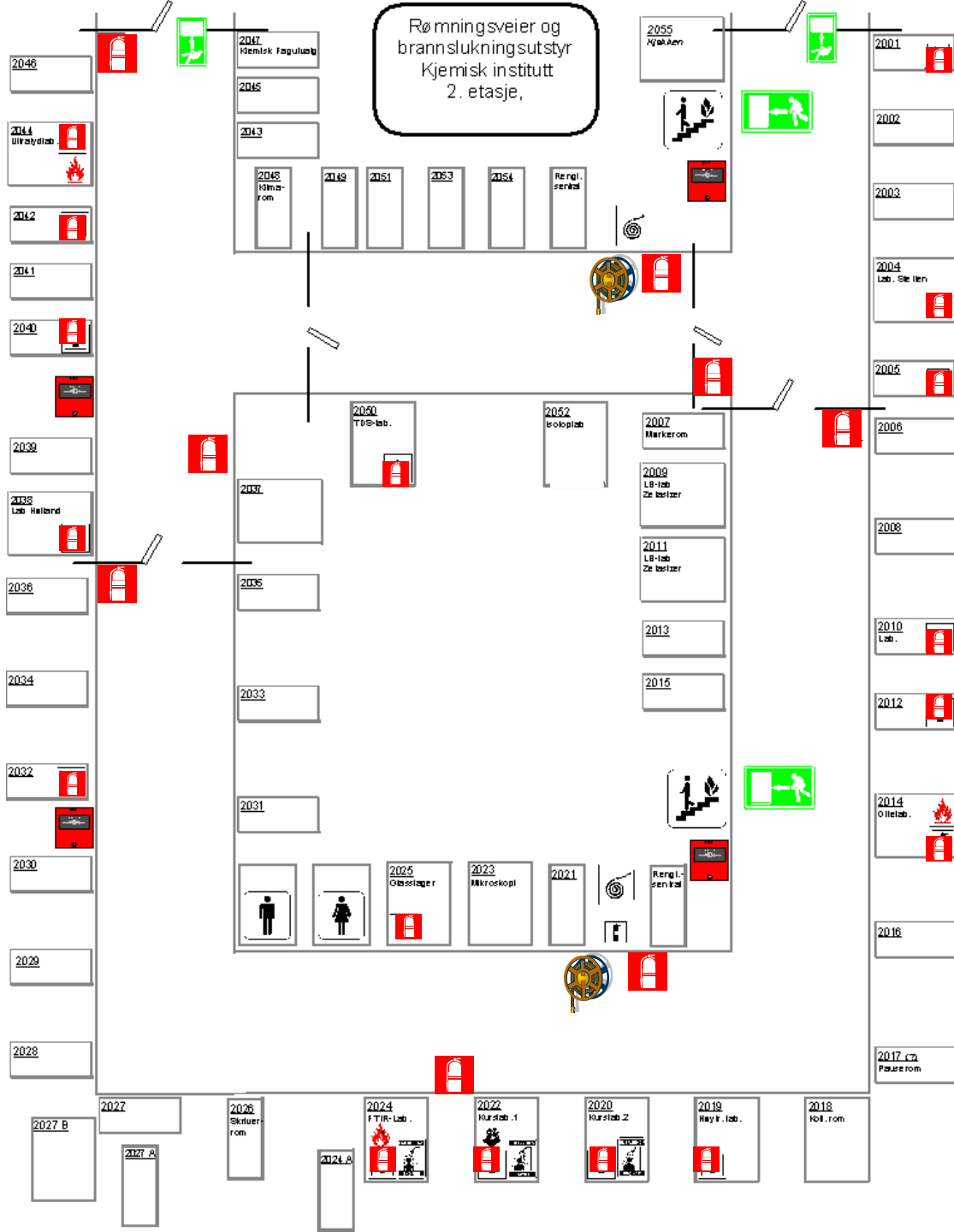
Allégaten

N



Allégt. 66
Auditoriefløyen
Samlings. pl

..... Evakueringsvei



Dersom du oppdager en brann skal du:

-Varsle brannvesenet på **telefon 110** og opplyse om:

Hvem som ringer

Hva som har skjedd

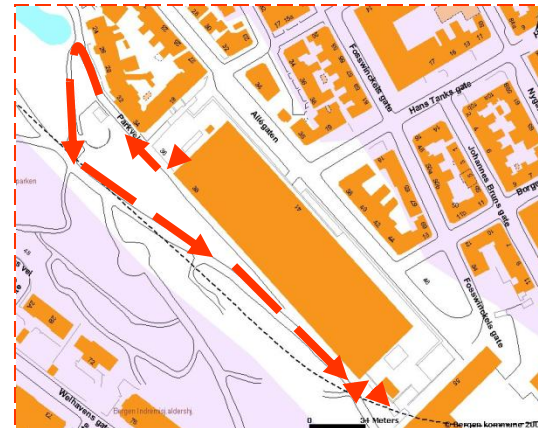
Hvor det brenner



• **Forsøk å slokke** uten å utsette deg selv eller andre for fare.

• **Utløse brannalarmen** manuelt, dersom alarmen ikke allerede er startet automatisk.

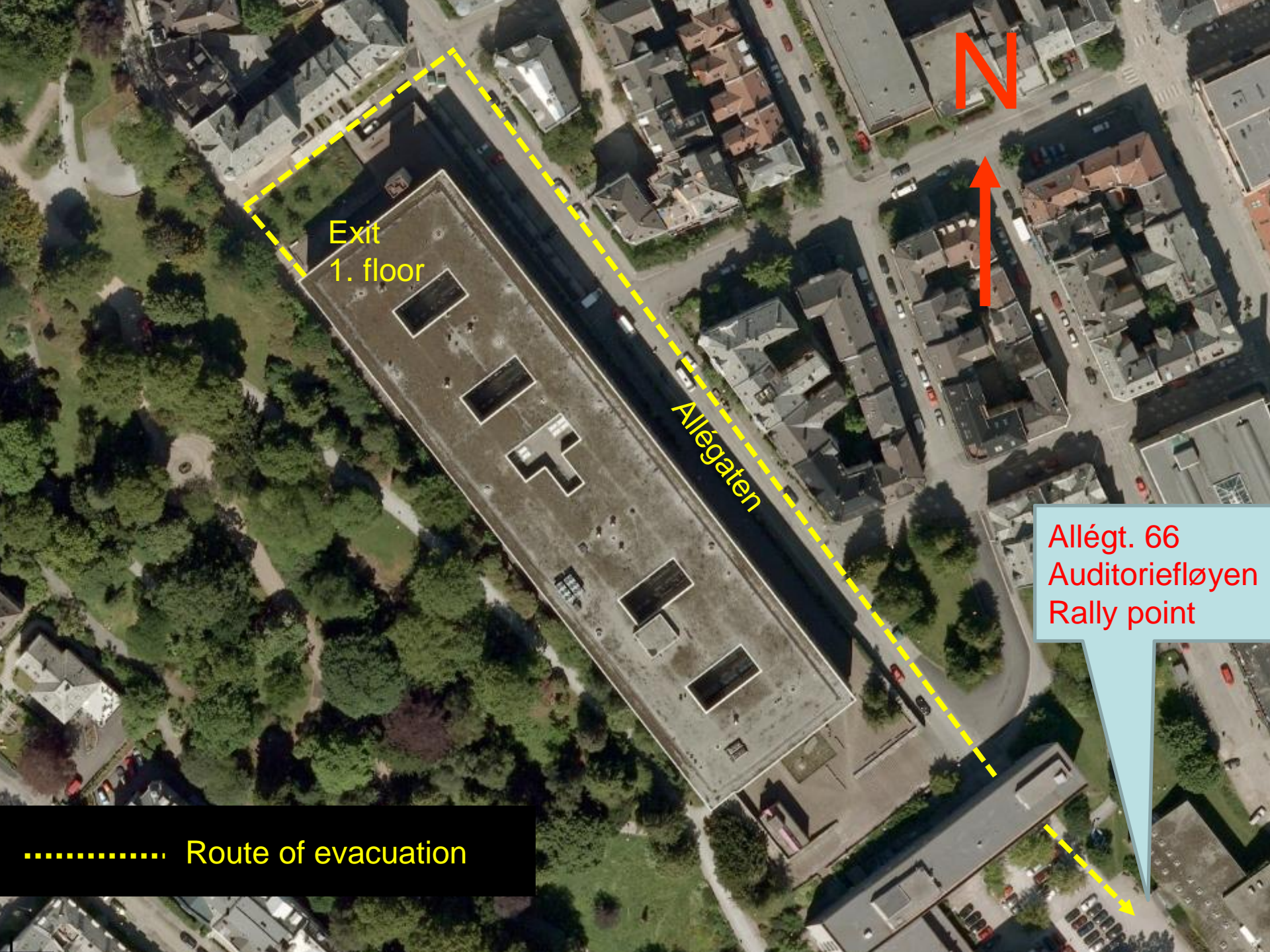
• **Evakuer!**



Evakueringsplan

- Evakuer straks alarmeren går
- Lukk vinduer og dører
- Bruk nærmeste rømningsvei
- Gå til samlingsplass. Allégt. 66





N

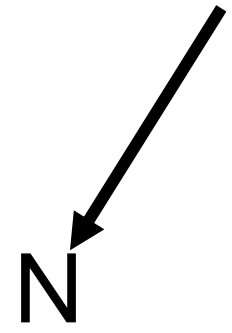
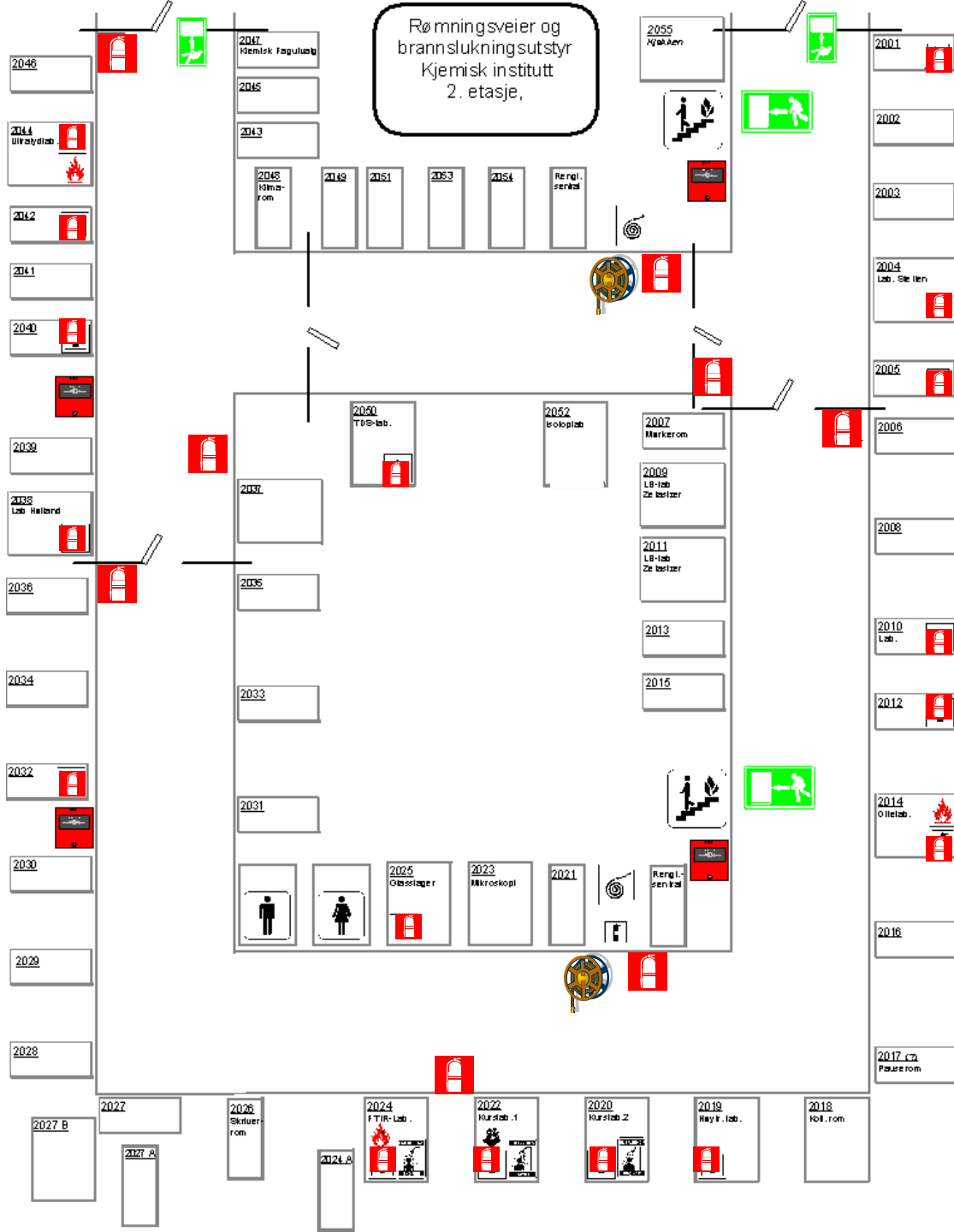


Exit
1. floor

Allégaten

Allégt. 66
Auditoriefløyen
Rally point

..... Route of evacuation



If **you** discover a fire do the following;

- Call fire department on phone (0)110 and inform about;

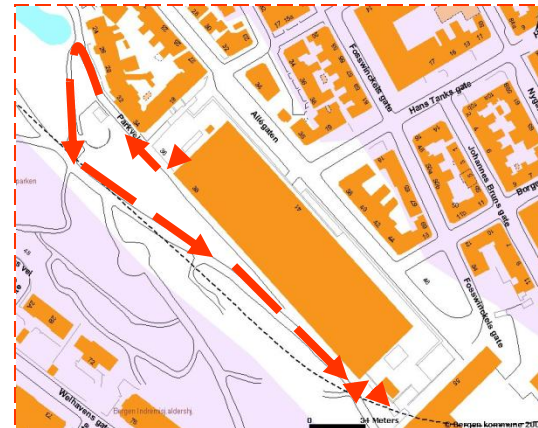
Who is calling

What has happened

Where is the scene of the fire



- Make an attempt of fire fighting using available fire-fighting equipment
- Trigger of fire alarm manually, if the alarm has not started automatically.
- Evacuate!



Plan of evacuation

- Evacuate immediately the alarm is heard
- Close windows and doors
- Use nearest exit
- Meet at rallying point, Allégt. 66

