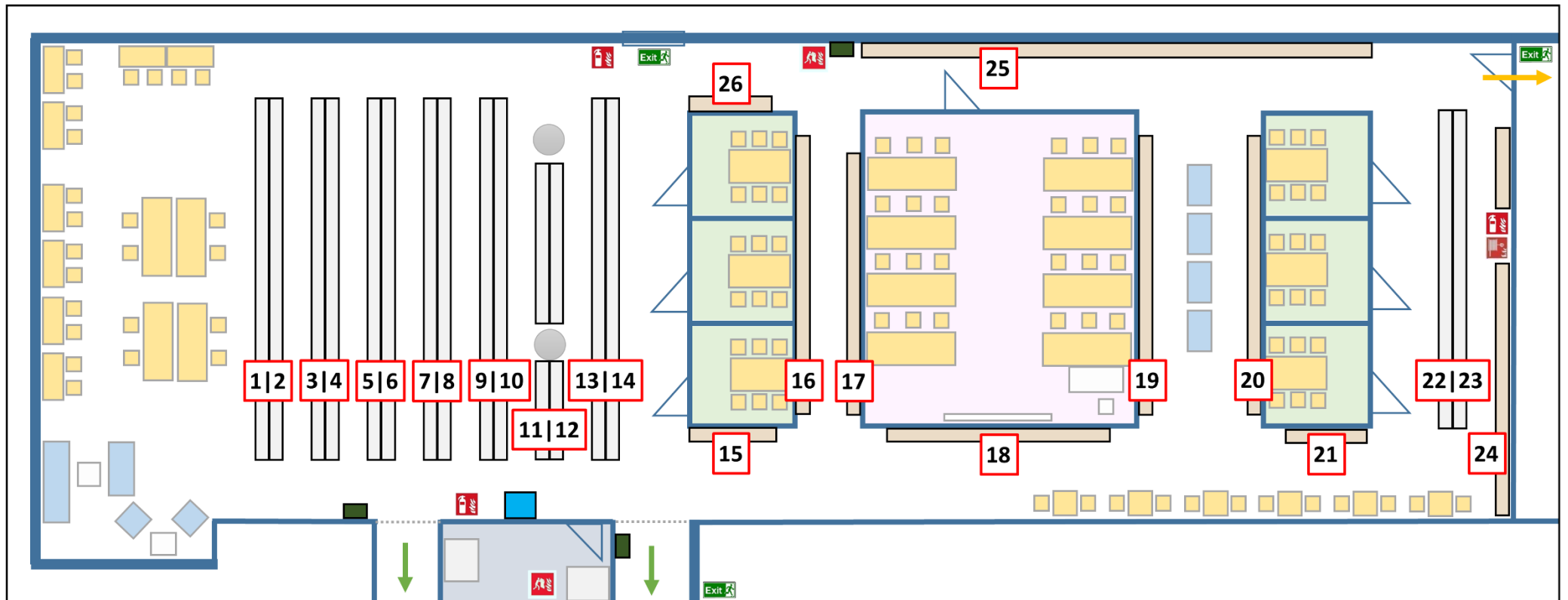


# Bibliotek for medisin - hylleoversikt

## Medical Library - shelflist



- Kursrom - course room
- Grupperom - group room
- Kopirom - copy room
- Arbeidsplass - study place
- Sitteplass - seat
- Selvbetjeningsautomat - self service machine
- til Ferdighetssenteret - to the Medical Skills Center
- til skrankeområdet - to the circulation desk
- Gitterport - lattice port
- Nødutgang - Emergency exit
- Brannteppe - Fire blanket
- Brannslukningsapparat - Fire extinguisher
- Brannslange - Fire hose
- Avfallsbeholder - Waste container

### Hylleinndeling - shelf sections

1	2	3	4	5
B - Philosophy	QA - Mathematics	QT - Physiology	SF - Animal Culture	WB - Practice of Medicine
GN - Anthropology	QH - General Biology	QU - Biochemistry. Cell Biology and Genetics	T - Technology	WC - Communicable Diseases
H - Social Sciences	QS - Human Anatomy	QV - Pharmacology	V - Naval Science	WD - Disorders of Systemic, Metabolic or Environmental Origin, etc.
L - Education	QT - Physiology	QW - Microbiology and Immunology	W - Health Professions	WE - Musculoskeletal System
P - Language and literature		QX - Parasitology	WA - Public Health	
Q - Science		QY - Clinical Laboratory Pathology		
Index		QZ - Pathology		

6	7	8	9
WF - Respiratory System	WM - Psychiatry	WU - Dentistry. Oral Surgery	WU - Dentistry. Oral Surgery
WG - Cardiovascular System	WN - Radiology. Diagnostic Imaging		WV - Otolaryngology
WH - Hemic and Lymphatic Systems	WO - Surgery		WW - Ophthalmology
WI - Digestive System	WP - Gynecology		WX - Hospitals and Other Health Facilities
WJ - Urogenital System	WQ - Obstetrics		WY - Nursing
WK - Endocrine System	WR - Dermatology		WZ - History of Medicine. Medical Miscellany
WL - Nervous System	WS - Pediatrics		Z - Bibliography/ Library Science
WM - Psychiatry	WT - Geriatrics. Chronic Disease		

### Tidsskrifthyller Journal shelves

- |                  |                  |
|------------------|------------------|
| 10 – Acp til Ame | 18 – Jou         |
| 11 – Ame til Ann | 19 – Jou til Lym |
| 12 – Ann til Arc | 20 – Läk til New |
| 13 – Arc til Cli | 21 – New til Nor |
| 14 – Cli til End | 22 – Nor til Pat |
| 15 – End til Eur | 23 – Pat til Sca |
| 16 – Eur til Høg | 24 – Sca til Swe |
| 17 – Inc til Jou | 25 – Swe til Øye |

26 – Studentoppgaver - Student theses