

KLINISK INSTITUTT

DET MEDISINSK
ODONTOLOGISKE FAKULTET
UNIVERSITETET I BERGEN



Infobrev nr. 5, årgang 4, 11. mars 2016



K1s stimuleringsiltak for søknader om eksterne midler

K1 har som et hovedmål økt gjennomslag for søknader om eksterne midler til forskning og utdanning. Nå har vi lagt opp et program for å bedre sjansene.

Mandag 29. februar arrangerte K1 et åpent søknadsseminar med god deltagelse. Ledende forskere, forskningsrådgiver og administrasjon ga tips om hvordan å lage gode søknader. Vektlegging av hovedmål og problemstilling, oppstilling i arbeidspakker, tydelig fremdriftsplan, sterke CV og konsortier, samt innovasjon og nytte ble påpekt.

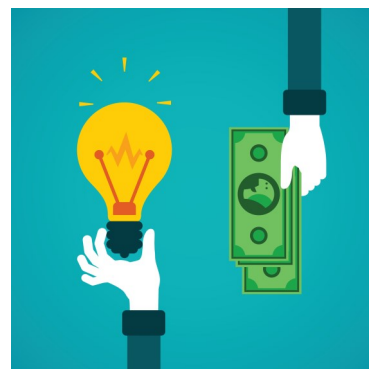
Onsdag 13. april og eventuelt torsdag 14. april vil et panel av erfarne K1-forskere vurdere og diskutere konkrete søknadsskisser fra dere. Odd Helge Gilja, Karen Rosendahl, Asgaut Viste og undertegnede har påtatt seg å lese grundig innsendte søknadsforslag og skisser og gi tydelig tilbakemelding. Vi setter av omkring en time per prosjekt for diskusjon og tilbakemelding. Alle kan melde seg på. Kravet er projektskisse / prosjektforslag mottatt senest 8. april, samt en tydelig vilje til å sende større søknad om eksterne prosjektmidler (NFR, EU, Kreftforeningen eller lignende).

Det tredje tiltaket i stimuleringspakken er at K1 stiller til rådighet inntil kr. 100.000 for å fremme større søknader om eksterne prosjektmidler. Midlene kan brukes til frikjøp for søknadsskriving, etablering av et søknadskonsortium eller annen målrettet aktivitet for å sikre høy søknadskvalitet.

Vi håper at disse tre tiltakene vil gi enda større vilje og kraft til å utarbeide konkurransedyktige søknader om eksterne midler. Administrasjon og ledelse ved K1, ved fakultetet og UiB sentralt vil bistå så godt vi kan. Planlegg søknad, meld deg på for søknadsevaluering, vurder om økonomisk tilskudd kan fremme søknaden din ytterligere.

Nils Erik Gilhus

Instituttleder

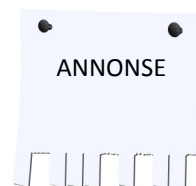




Tilbakemelding på prosjektsøknader

Ved K1 etablerer vi nå et tilbud om tilbakemelding fra faglige eksperter på søknader og søknadsskisser om eksterne prosjektmidler.

Send inn et søknadsforslag, eller gjerne også en søknadsskisse innen fredag 8. april kl. 12.00 til solveig.witso@uib.no. Da vil du bli kalt inn til et dialogmøte onsdag 13. april etter lunsj, evt. 14. april. Søknadene blir vurdert av Odd Helge Gilja, Karen Rosendahl, Asgaut Viste og Nils Erik Gilhus. Denne [malen](#) kan om ønskelig benyttes eller være et hjelpemiddel. Tilbudet gjelder forsknings- og utdannings-søknader om større eksterne midler, det vil si midler utenom universitet og helseforetak.



100 000 KR

TIL SØKNADSKRIVING

Klinisk institutt 1 utlyser i år inntil kr 100 000 i støtte til arbeid med eksterne søknader om forsknings- og undervisningsmidler. Midlene skal brukes til å legge til rette for best mulige søknader om større eksterne utlysninger (NFR, EU).

Eksempler på bruk er: frikjøp, reise, timelønn for å dekke undervisning og konsulenttjenester. Søkeren må ha ansettelsesforhold ved Klinisk institutt 1 og det er et krav at prosjektet forankres ved instituttet.

Søknadsfrist 2. april

Søknaden må inneholde:

Hvilket program det søkes

Kortfattet projektskisse (Max 2 sider)

Spesifisert budsjett

CV

Publikasjonsliste

Søknaden sendes til økonomikoordinator Håvard Hoel Aass Havard.Aass@k1.uib.no



Bruk av digitale læringsverktøy i undervisning

Studentene ønsker at digitale læringsverktøy tas i bruk i enda større grad.

Universitetsbiblioteket abonnerer blant annet på flere e-bøker og flere av disse er nevnt i pensumlistene. I tillegg har man gjennom universitetsnettet tilgang til "atekst" som er et stort mediearkiv. Her kan man finne avisoppslag og lese i aviser.

Videre ønsker studentene å oppfordre forelesere til å finne frem til egnede gratis digitale ressurser. Det finnes nemlig mange slike, feks <http://www.opthobook.com/> som er et gratis læreverk i oftalmologi (øyefaget), radiopaedia.org som er et interaktivt radiologilæringsverktøy og "Neurology in Africa" som er en gratis e-bok som har en litt annen innfallsvinkel ved at den fokuserer på sykdommer som er vanligere Afrika, feks malaria og HIV og som tilfeldigvis er utgitt av UiB og Dr William Howlett. <http://www.uib.no/en/cih/72120/book-neurology-africa>



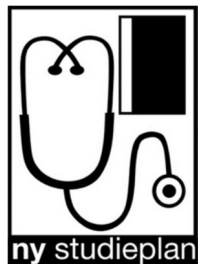
Etterspørsel etter nye særoppgaver til medisinstudenter

Særoppavekomitéen skal i løpet av våren 2016 utarbeide oppdatert liste med forslag til nye særoppgaver for medisinstudenter på kull 13, som skal bestemme seg for veileder og oppgave innen juni 2016.

Komitéen ber alle fakultetets ansatte og veiledere tilknyttet HUS om å fremme forslag til nye særoppgaver. Hver veileder kan gjerne ha flere oppgaver. Spesielt vil vi henstille til alle som hittil ikke har veiledet studenter om å sende inn oppgaveforslag.

Nye særoppaveforslag må meldes innen **15. mars 2016**. Les mer [her](#)

Ny studieplan medisin– nyhetsbrev



Lenke til nyhetsbrev for ny studieplan i medisin for MARS 2016:

<http://www.uib.no/mofa/66684/nyhetsbrev#>

Kursoversikt Inspera Assessment

Inspera assessment er Universitetet i Bergens sitt system for digital vurdering.

Inspera er en nettleaserbasert tjeneste som støtter gjennomføring av skoleeksamen, og samtidig de faglige og administrative prosessene rundt eksamen.

Det arrangeres innføringskurskurs i Inspera i løpet av våren 2016, se [her](#).

Det vil også bli arrangert kurs og arbeidsstuer lokalt på HUS-campus, men tidspunktene er ikke avklart.





Nye utlysninger/new research funding announcements

ExtraStiftelsen

Issues related to health services in the municipalities and the interaction between various players in the health sector, including user involvement, will be given priority in the application process. It can also be applied for clinical research related to development of new treatments and services.

Deadlines:

15 March: ExtraExpress vår.

1 June: Research Projects

Read more [here](#)

Information meeting about research fundings from Extrastiftelsen **Monday 14 March 09:00-11.15**, Haukeland universitetssykehus, Auditoriet, Bikuben. [Program](#)

Michael J. Fox Foundation for Parkinson's research

Research within three different programmes will be funded:

[Target Advancement Program](#): one to two years grants, \$100.000 to \$200.000 per project

[Therapeutic Pipeline Program](#), up to three years of funding, budget is not limited, MJFF will commit up to \$10 million to the program

[Outcome Measures Program](#), one to three years grant, budget is not limited, MJFF will commit up to \$4 million to the program. **Deadline: for pre-proposals 18 May 2016**



Civitan Norges Forskningsfond

[Civitan Norges Forskningsfond for Alzheimers sykdom](#)" has an open call for applications. Up to 200 000 NOK are available for one or more research projects. **Deadline: 1 May 2016**

Novo nordisk fonden- Exploratory pre-seed grants

The exploratory pre-seed program is a stimulus fund established to accelerate commercialization of biomedical research findings and development of novel technologies within the life sciences. The goal of an exploratory pre-seed grant is to stimulate entrepreneurship and to explore the potential of research findings at a very early stage (pre-seed), and to prepare the project for a full pre-seed grant at a later stage. **The deadline is April 5, 2016 at 4pm.**

Read more [here](#)



Founding for cooperation in higher education

SPIRE proposals

University of Bergen's Strategic Programme for International Research and Education (SPIRE) in 2016. This call is open to individual academic members of staff from all faculties, departments and centres within the University of Bergen. Multilateral projects that partner with more than one institution are particularly welcomed.

Read more [here](#). **Deadline: 29 April 2016**

The Research Council of Norway



Programme for Research and Innovation in the Educational Sector (FINNUT). Education plays an important role in an individual's health, quality of life, social engagement, social integration and affiliation with working life. Knowledge and expertise are crucial to the innovation capacity and competitiveness of industry as well as the sustainability of the welfare state, the formation of public opinion and democracy. Read more [here](#).

Deadline Innovation projects in the education sector: 20 April 2016 (13.00). Deadline other projects: Continuing

Norwegian centre for international cooperation in education (SIU)



- **Nordic– Russian Cooperation.** Promotes multifaceted contacts in the fields of education and research, in the interest of sustainable social and economic development in the Nordic countries and Russia. **Deadline: 2 May 2016 (15.00)**
- **International Partnerships for Excellent Education and Research (INTPART)** Aims to contribute to durable relations with strong scientific environments in prioritized countries outside of the EU. Projects must extend beyond collaborations between individual researchers and PhD candidates. Read more [here](#). **Deadline: 25 May 2016**
- **UTFORSK.** The main objective of the UTFORSK Partnership Programme is to promote cooperation on higher education with Brazil, China, India, Japan, Russia and South Africa. Read more [here](#). **Deadline: 31 May 2016**
- **CAPES-SIU– programme.** The programme supports collaborations between HEIs in Brazil and Norway. Read more [here](#).
- **Partnership Programme with North America.** The programme supports scientific collaborations and aims to establish durable and scientifically founded collaborations with Canada and the USA. Main partner in Norway and in Canada and/or the USA must be HEI with accredited education programmes. At least 50 % of the grants will be awarded to projects that include network partners from the employment and business sector. **Deadline: 31 May 2016**

An Information meeting about the partnerships programmes will take place

7 April in Bergen.

[More information and registration](#)



Utvalgte Horizon 2020 utlysninger

Her har du samlet utlysningene som hører inn under Horizon 2020.



Horisont 2020 er et EU-program med store midler å hente. Se gjennom og finn det som er relevant for ditt felt! Se [hovedside med Horizon 2020-utlysninger her](#). UiB har og sin [egen Horizon website](#).

Sammen med EU-midlene følger posisjoneringsmidler (POS) og prosjektetableringsmidler (PES) fra UiB.

[Generell info](#)
[POS-søknader](#)
[PES-søknader](#)

Utvalgte aktuelle frister:

European Research Council (ERC) *Frontier research grants*

Pre-Announcement [Advanced Grants](#): are designed to support excellent Principal Investigators at the career stage at which they are already established research leaders with a recognised track record of research achievements.

Deadline: 1 September 2016. → **A course for ERC Advanced Grants at UiB:** External consultants from Beacon-tech in Tel Aviv, Israel, who have a very good track record of success with ERC will held the course. As a special service you can book individual sessions with the consultants after lunch to discuss and shape your idea and get feedback on your CV and track record presentation. **Date: 9 June, UiB Bergen**

Please register using a [form](#) to help FA plan the day accordingly.

Under *Personalised medicine, single stage*

[SC1-PM-01-2016:Multi omics for personalised therapies on diseases of the immune system](#)

[SC1-PM-04-2016:Networking and optimising the use of population and patient cohorts at EU level](#)

[SC1-PM-06-2016:Vaccine development for malaria and/or neglected infectious diseases](#)

[SC1-PM-09-2016:New therapies for chronic diseases](#)

[SC1-PM-11-2016-2017:Clinical research on regenerative medicine](#)

[SC1-PM-21-2016:Implementation research for scaling-up of evidence based innovations and good practice in Europe and low- and middle-income countries](#)

Deadline: 13 April 2016. For more topics and information please check [here](#).

Individual Fellowships (IF): aims to help experienced researchers to advance their careers and gain new skills through advanced training, international mobility, and optional intersectoral secondments. The host organization can be universities and research institutes in addition to a company or other non-academic sector organizations.

Deadline: 14 September 2016

Important!

Please contact [Sumathi Subramaniam](#) or [Ramune Midttveit](#) **asap** in the case you are planning to send an application for this Programme.

Andre Horizon 2020-relaterte utlysninger

- **Call is open! AAL (Active and assisted living) announces the challenge for the AAL 2016 [Call for proposals of the AAL Programme](#):** "Living well with dementia. The contribution of ICT to integrated solutions for enabling the wellbeing of people living with dementia and their communities". **Deadline:** 26 May 2016 [AAA call 2016 information day](#), 8-9 March Brussels
- **Call is open! [JPND Call in Early 2016](#)**
The EU Joint Programme – Neurodegenerative Disease Research (JPND) will shortly begin another action to support working groups on "Harmonisation and Alignment in Brain Imaging Methods for Neurodegeneration". Call launch date is in January. **Deadline: March 2016.**
- **[Transmission Dynamics of Anti-Microbial Resistance \(AMR\) Call for Proposals.](#)** Call will support multidisciplinary research networks to conduct collaborative and complementary studies that will unravel the complex dynamics of selection and transmission of antimicrobial resistance to understand the mechanisms that contribute to the spread of resistance. **Deadline: for pre-proposals 21 March 2016.**



Fortsettelse - Andre Horizon 2020-relaterte utlysninger



IMI 2 (Innovative Medicines Initiative 2) – Call 7 for proposals in now open and covers the following topics:

- Validation of translational imaging methods in drug safety assessment (TRISTAN)
- Identification of druggable targets modulating misfolded proteins in Alzheimer's and Parkinson's diseases
- Pathological neuron-glia interactions in neuropathic pain
- Dry age-related macular degeneration: development of novel clinical endpoints for clinical trials with a regulatory and patient access intention

A comprehensive 'pediatric preclinical POC platform' to enable clinical molecule development for children with cancer

Deadline: 17 March 2016 Sign up for the [webinars](#) on IMI 2 - Call 7

The Human Frontier Science Program (HFSP) (HFSP) is an international program of research support, [funding frontier research on the complex mechanisms of living organisms](#). Call for 2017 Program and Young Investigator applications are now open. **Deadline: for registration is 21 March 2016**

COST Action: open Call - funding for research networks. Proposals should reflect the main characteristics of COST Actions, namely providing for knowledge sharing, creation and application, being open and output-oriented while aiming at strengthening the scientific and technological basis of the proposed topic(s). **Deadline: 25 April 2016**

KLINISK INSTITUTT 1



Infobrev nr. 5, årgang 4, 11. mars 2016



Vi minnar om tidlegare annonseringar i K1-nytt, framleis aktuelt:



Forskningsrådet/Research Council of Norway

- INTPART: [Funding for studies or research in China](#). The Chinese government offers up to 10 scholarships for Norwegian students or researchers who wish to study or conduct research at a Chinese institution. **Deadline: 15 March 2016**
- [Integrating and opening research infrastructures of European interest](#). Open call to bring together, integrate on European scale, and open up key national and regional research infrastructures to all European researchers. It is possible to join already established consortia. **Deadline: 30 March 2016.**
- **Pre-Announcement BEDREHELSE:** [Intervention research, effect and implementation of health promotion and preventive measures](#). Research has to be cross-sectoral and requires close collaboration with partners who decide and implement measures: public sector, private sector, NGOs and other partners locally, nationally and internationally. **Deadline: 20 April 2016**
- **Pre-Announcement BEHANDLING:** Topic [rehabilitation](#) defined as limited in time, planned processes with clear targets and measures, where several participants are working together to provide the necessary assistance to the patient and the user's own efforts to achieve the best possible functioning and coping ability, independence and participation socially and in society. **Deadline: 20 April 2016**
- [FORNY2020 Proof-of-Concept call](#): promotes innovation based on research results. The programme facilitates the commercialisation of results from projects conducted at publicly-funded research institutions and helps to bring the products and services to the market. BTO will coordinate the application process, project management and business development. In the last years, 30 – 50 % of our applications have been successful. **Deadline: 20 April 2016**
- [HELSEVEL Forprosjekter for Innovasjonsprosjekter i offentlig sektor.](#)

Utlysningsplan for HELSEVEL for 2016:

- Hvordan holde seg oppdatert? Meld deg på [programmets nyhetsbrev](#). All informasjon fra programmet sendes ut med programmets nyhetsbrev

Søknadsfrist	Tema/støtteform
25. mai	<ul style="list-style-type: none">• Skisser for kjernemiljø og klynge• Forskerprosjekter og eventuelt Annen støtte
12. oktober	<ul style="list-style-type: none">• Kjernemiljø og klynge• Innovasjonsprosjekter i offentlig sektor

Kreftforeningen/ The Norwegian Cancer Society

[Foreign Scholarships](#): A personal grant is awarded to a designated individual (researcher, doctoral fellow or post-doctoral fellow) to promote competence building and internationalization of Norwegian research. Overseas research grants are awarded under the auspices of a project funded by the Norwegian Cancer Society and may be provided for visits abroad lasting from two to 12 months. **Deadline: 15 March 2016**



ERASMUS [ERASMUS+ page/Programme Guide](#)

[Strategic partnerships](#). Transnational projects enhancing the quality and innovativeness of learning and teaching, developing new curricula, building bridges between the different sectors of education and fostering more intense forms of cooperation to achieve the modernisation objectives, including a better exploitation of open education resources. Minimum of three organisations from three different Programme Countries. **Deadline: 31 March 2016**

WUN-stipender for Ph.d.-kandidater og forskere i Hong Kong

Worldwide University Network (WUN) og Chinese University of Hong Kong lyser ut stipender for gjesteforskere og Ph.d.-kandidater for perioden 01. august 2016 til 31. juli 2017. Se full utlysning og detaljer her (for Ph.d-kandidater) and her (for forskere). **Søknadsfrist er 08. april.**

Meetings/workshops/ conferances

Conference: [8th European Conference on Comparative Neurobiology \(ECCN\)](#). **April 7 – 9**, 2016, Munich

[eHealth Week 2016](#): This year's educational programme will focus on three main themes: Empowering People, Trust & Standards and Innovation & Transition, 8-10 June, Amsterdam.

[Personalised Medicine Conference 2016](#), 1-2 June Brussels

IARMM General Assembly 2016 joint with the 5th World Congress of Clinical Safety (5WCCS)

The theme of the congress is "Smart Hospitals and Healthcare: Health Care Management & Leadership, Risk, Quality, and Productivity." **21 - 23 September 2016** at the Joseph B. Martin Conference Center, Harvard Medical School, Boston, USA, hosted by the [International Association of Risk Management in Medicine \(IARMM\)](#). [Read more here.](#)

Event: Nordic-French H2020 workshop on Rare Diseases. The objective is to generate more H2020 applications targeting these calls. **Oslo, 12 - 13 May, 2016**

Konferanse: Dobbeldiagnose – Rus og psykiatri

Sikre deg din plass på den årlige møteplassen for faglig oppdatering på ROP-lidelser, rus og psykiatri. Årets konferanse er spekket med aktuelle foredrag, ledende eksperter, fremtredende ressurser og sterke brukerstemmer. **Tid og sted: 10.– 11. mai 2016, Oslo.** Les mer [her](#). [Påmelding](#)

KLINISK INSTITUTT 1



Infobrev nr. 5, årgang 4, 11. mars 2016



Ph.d.-hjørnet

K1s nylige disputaser



Kristin Modalsli Sand disputerte i dag 11. mars med avhandlinga "Stroke and vision - Management and-outcome of vision problems in ischemic stroke patients".

Rettleiarar: Jana Midelfart Hoff, Lars Thomassen, Halvor Næss og Ulrike Waje-Andreassen.

Les meir [her](#)

Vi gratulerer med vel gjennomført disputas!

National PhD Conference in Neuroscience

Join the annual conference organized by PhD students, for PhD students, through the Norwegian Research School in Neuroscience!



Time and place: 21 -23 September 2016, Hurdalsjøen Hotel

Register by 23 May 2016

For more information, look [here](#),

NRSN Summer School in Neuroscience



NRSN offers an annual summer school that provides PhD students with theoretical and practical research training in current forefront areas of neuroscience.

The summer school is intended for PhD students in neuroscience, and priority will be given to members of NRSN. Other participants may be accepted if there are still places available.

The NRSN Summer School in Neuroscience 2016 is organized by the [Kavli Institute for Systems Neuroscience](#) at NTNU, Trondheim, on 21-28 August 2016. [Register here](#). Deadline: 1 April 2016. [View program and practical information](#).



Siste publikasjoner frå K1, saksa frå Pubmed

Vi set stor pris på beskjed om noko manglar. Om nokon har publikasjonar som ikkje vert dekkja av våre søk i Pubmed, ta kontakt med Solveig.Witso@uib.no

Nivå 2

- [Subjective quality of life in first-episode psychosis. A ten year follow-up study.](#) Gardsjord ES, Romm KL, Friis S, Barder HE, Evensen J, Haahr U, Ten Velden Hegelstad W, Joa I, Johannessen JO, Langeveld J, Larsen TK, Opjordsmoen S, Rund BR, Simonsen E, Vaglum P, McGlashan T, Melle I, Røssberg JI. Schizophr Res. 2016 Feb 29. pii: S0920-9964(16)30087-1. doi: 10.1016/j.schres.2016.02.034.
- [Surgery for an ageing population.](#) Søreide K, Wijnhoven BP. Br J Surg. 2016 Jan;103(2):e7-9. doi: 10.1002/bjs.10071
- [Molecular and biological hallmarks of ageing.](#) Aunan JR, Watson MM, Hagland HR, Søreide K. Br J Surg. 2016 Jan;103(2):e29-46. doi: 10.1002/bjs.10053. Review.
- [Emergency general surgery in the geriatric patient.](#) Desserud KF, Veen T, Søreide K. Br J Surg. 2016 Jan;103(2):e52-61. doi: 10.1002/bjs.10044. Epub 2015 Dec 1. Review.
- [Epidemiology and classification of gastroenteropancreatic neuroendocrine neoplasms using current coding criteria.](#) Sandvik OM, Søreide K, Gudlaugsson E, Kvaløy JT, Søreide JA. Br J Surg. 2016 Feb;103(3):226-32. doi: 10.1002/bjs.10034. Epub 2015 Oct 29.
- [BRAF-V600E expression in primary nodular melanoma is associated with aggressive tumour features and reduced survival.](#) Hugdahl E, Kalvenes MB, Puntervoll HE, Ladstein RG, Akslen LA. Br J Cancer. 2016 Feb 25. doi: 10.1038/bjc.2016.44.
- [Deciphering the molecular code to colorectal liver metastasis biology through microsatellites and allelic loss: the good, the bad and the ugly.](#) Søreide K, Watson MM, Hagland HR. Gastroenterology. 2016 Feb 25. pii: S0016-5085(16)00251-1. doi: 10.1053/j.gastro.2016.02.060.

Nivå 1

- [Titin antibodies in "seronegative" myasthenia gravis - A new role for an old antigen.](#) Stergiou C, Lazaridis K, Zouvelou V, Tzartos J, Mantegazza R, Antozzi C, Andreetta F, Evoli A, Deymeer F, Saruhan-Direskeneli G, Durmus H, Brenner T, Vaknin A, Berrih-Aknin S, Behin A, Sharshar T, De Baets M, Losen M, Martinez-Martinez P, Kleopa KA, Zamba-Papanicolaou E, Kyriakides T, Kostera-Pruszczyk A, Szczudlik P, Szyluk B, Lavrnic D, Basta I, Peric S, Tallaksen C, Maniaol A, Gilhus NE, Casasnovas Pons C, Pitha J, Jakubíkova M, Hanisch F, Bogomolovas J, Labeit D, Labeit S, Tzartos SJ. J Neuroimmunol. 2016 Mar 15;292:108-15. doi: 10.1016/j.jneuroim.2016.01.018.
- [The global burden of injury: incidence, mortality, disability-adjusted life years and time trends from the Global Burden of Disease study 2013.](#) Haagsma JA, Graetz N, Bolliger I, Naghavi M, Higashi H, Mullany EC, Abera SF, Abraham JP, Adofu K, Alsharif U, Ameh EA, Ammar W, Antonio CA, Barrero LH, Bekele T, Bose D, Brazinova A, Catalá-López F, Dandona L, Dandona R, Dargan PI, De Leo D, Degenhardt L, Derrett S, Dharmaratne SD, Driscoll TR, Duan L, Petrovich Ermakov S, Farzadfar F, Feigin VL, Franklin RC, Gabbe B, Gosselin RA, Hafezi-Nejad N, Hamadeh RR, Hajar M, Hu G, Jayaraman SP, Jiang G, Khader YS, Khan EA, Krishnaswami S, Kulkarni C, Lecky FE, Leung R, Lunevicius R, Lyons RA, Majdan M, Mason-Jones AJ, Matzopoulos R, Meaney PA, Mekonnen W, Miller TR, Mock CN, Norman RE, Orozco R, Polinder S, Pourmalek F, Rahimi-Movaghar V, Refaat A, Rojas-Rueda D, Roy N, Schwebel DC, Shaheen A, Shahraz S, Skirbekk V, Søreide K, Soshnikov S, Stein DJ, Sykes BL, Tabb KM, Temesgen AM, Tenkorang EY, Theadom AM, Tran BX, Vasankari TJ, Vavilala MS, Vlassov VV, Woldeyohannes SM, Yip P, Yonemoto N, Younis MZ, Yu C, Murray CJ, Vos T. Inj Prev. 2016 Feb;22(1):3-18. doi: 10.1136/injuryprev-2015-041616. Epub 2015 Dec 3.
- [Potentially inappropriate medications and drug-drug interactions in home-dwelling people with mild dementia.](#) Oesterhus R, Aarsland D, Soennesyn H, Rongve A, Selbaek G, Kjosavik SR. Int J Geriatr Psychiatry. 2016 Feb 28. doi: 10.1002/gps.4456.



- [Juvenile idiopathic arthritis and the temporomandibular joint: A comprehensive review.](#) El Assar de la Fuente S, Angenete O, Jellestad S, Tzaribachev N, Koos B, Rosendahl K. J Craniomaxillofac Surg. 2016 Feb 3. pii: S1010-5182(16)00028-7. doi: 10.1016/j.jcms.2016.01.014
- [Global epidemiology of gastrointestinal stromal tumours \(GIST\): A systematic review of population-based cohort studies.](#) Søreide K, Sandvik OM, Søreide JA, Giljaca V, Jureckova A, Bulusu VR. Cancer Epidemiol. 2016 Feb;40:39-46. doi: 10.1016/j.canep.2015.10.031. Epub 2015 Nov 24. Review.
- [A prospective risk-stratified follow-up programme for radically treated renal cell carcinoma patients: evaluation after eight years of clinical use.](#) Beisland C, Guðbrandsdóttir G, Reisæter LA, Bostad L, Hjelle KM. World J Urol. 2016 Feb 27.
- [What Is the Best Preoperative Imaging for Endometrial Cancer?](#) Haldorsen IS, Salvesen HB. Curr Oncol Rep. 2016 Apr;18(4):25.
- [Cognitive decline in dementia with Lewy bodies: a 5-year prospective cohort study.](#) Rongve A, Soennesyn H, Skogseth R, Oesterhus R, Hortobágyi T, Ballard C, Auestad BH, Aarsland D. BMJ Open. 2016 Feb 29;6(2):e010357. doi: 10.1136/bmjopen-2015-010357.
- [Grading of urothelial carcinoma of the upper urinary tract according to the World Health Organization/International Society of Urological Pathology classification from 2004 is a valuable tool when considering whether a patient is suitable for endoscopic treatment.](#) Almås B, Halvorsen OJ, Gjengstø P, Ulvik Ø, Beisland C. Scand J Urol. 2016 Feb 29:1-7.
- [Glass-windowed ultrasound transducers.](#) Yddal T, Gilja OH, Cochran S, Postema M, Kotopoulos S. Ultrasonics. 2016 Feb 12;68:108-119. doi: 10.1016/j.ultras.2016.02.005.
- [Spinal cord compression secondary to vertebral echinococcosis.](#) Sahlu A, Mesfin B, Tirsit A, Wester K. J Neurosci Rural Pract. 2016 Jan-Mar;7(1):143-6. doi: 10.4103/0976-3147.165357.



Aktuelle UiB velferdstilbud:

New application period for the cottages at Ustaoset and Tingviken, summer 2016

It is now opened to apply for U-heimen, Ottessesheimen and Butten at Ustaoset and Tingviken at Utne for the summer period from **19 June until 14 August 2016**.

Cancellation deadline has been changed to 30 days before rental period start to avoid penalty for cancellation. Please use the UoB electronic cabin system by logging in with your registered username and password. (<https://skjema.app.uib.no/hytter>). For more information, see [here](#).



Kinobilletter

Ansatte ved UiB kan kjøpe rabatterte kinobilletter.

- Hver ansatt kan en gang hver 30 dag kjøpe 2 billetter a kr. 70,-
- I tillegg kan man kjøpe et ubegrenset antall billetter a kr. 95,-

Bestilling: <https://reg.app.uib.no/kinobilletter>

Les mer [her](#).



Barne- og familieforestillingen: Tonje Glimmerdal

Lørdag 12. mars kl. 15.00

UiBpris kr. 140. Klikk deg inn på denne [lenken](#)

Velg ønsket forestilling ved å trykke **kjøp billett**

Klikk deg så inn via **Hjelp meg med å finne de beste billettene som er tilgjengelige**

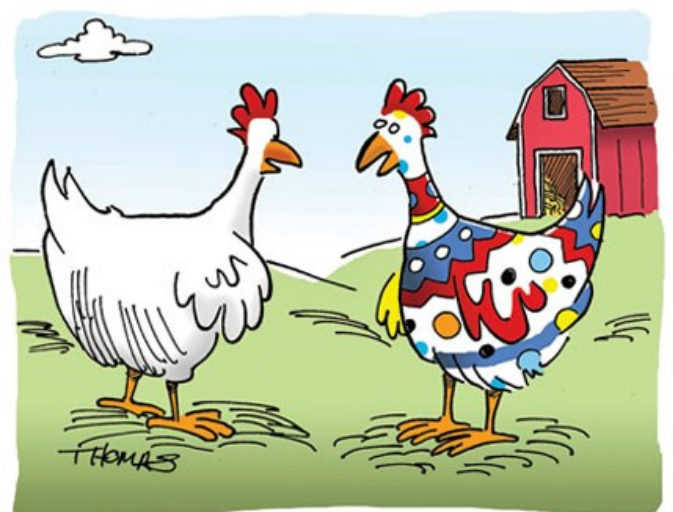
Velg priskategori **Ansatt U.I.B., kode TONJEUIB**

Skriv inn ønsket antall billetter og maskinen velger nå av gode seter som vi allerede har holdt av til dere.

Forsett til betaling ved å logge deg inn til kassen.



God påske!



"I was an Easter egg."



Nyttige lenker

[Nettsider for Klinisk Institutt 1](#)

[MedViz](#)

[Campusbussen](#)

[Kontaktinfo for K1-adm.](#)

[Horizon 2020](#)

[Cristin](#)

[Fakultetets nettsider](#)

[Nye doktorgrader ved UiB](#)

[REK Vest](#)

[UiBs intranett](#)

[Forskningsrådets nettsider](#)

[Telefonkatalogen \(intern\)](#)

[CCBIO](#)

[Fakultetsstyresaker](#)

[Oslo Cancer Cluster](#)

[UiBs personalerelement](#)

[Fakultetets strategiplan](#)

[Ny studieplan medisinstudiet](#)

[HMS-portalen](#)

[Helse Bergen/UiBs webside med retningslinjer for medisinsk forskning](#)

[Mi Side](#)

[Ledige stillinger ved UiB](#)

[Fra to mailbokser til én.](#)

[BBB seminarene](#)

E-post adresser til studieseksjonene: [Personalportalen Pagaweb](#)

[CCBIO seminarene](#)

Medisin:

[BRITA](#)

studie@kliniskmedisin.uib.no

[Pubmed](#)

Ernæring: studie-nutrition@uib.no

[LYDIA](#)

[SEBRA](#)

[På Høyden nettavis](#)

[Hvordan finne ut hva som er nivå 1 eller 2-tidsskrift](#)

E-post til K1s administrasjon:
post@k1.uib.no

[Tidligere utgaver av K1-nytt](#)

[Håndbok ved mistanke om fusk](#)

E-post til redaktør av K1-nytt:
Solveig.Witso@uib.no

