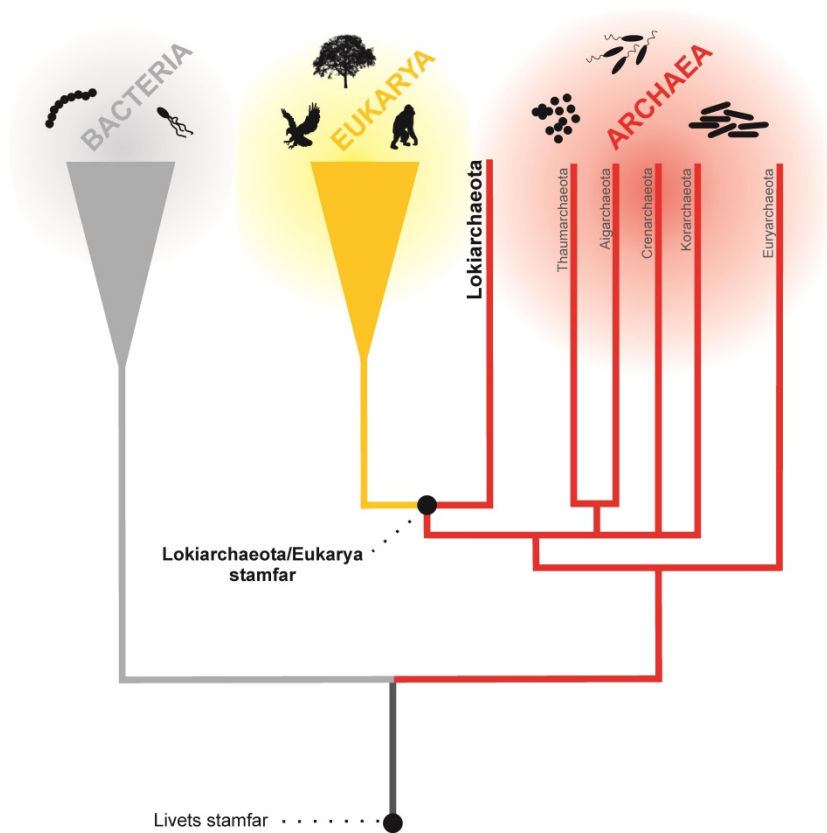


Pictures from Steffen Leth Jørgensen's activity
(Picture credits to Steffen Leth Jørgensen and Cédric Hamelin)



*from the PNAS paper, showing how Lokiarchaeota, a new Archaea phylum that Leth Steffensen and colleagues have identified, and may provide fundamental insights into our understanding of the tree of life.



Launching a gravity corer to retrieve ocean floor sediments



SLJ examining a recovered sediment core



Taking geochemical data from a split core and preparing to take sediment samples (SLJ in middle)

SLJ undertaking preliminary sample preparation procedures on board ship.



DNA gel below

