

UiB has a new compactor for cardboard and paper. It is localized in the Datablokk waste room, available right outside the entrance, facing the park. This is not the recycling station / miljøstasjon that we have been using in the past.

The compactor is for paper and cardboard only, and you may need to get a keycard from Kine-Marie to use it if your card doesn't work.

The compactor is small, and you close the door after the cardboard has been placed through the opening. If the compressor is full, please let Kine-Marie know.

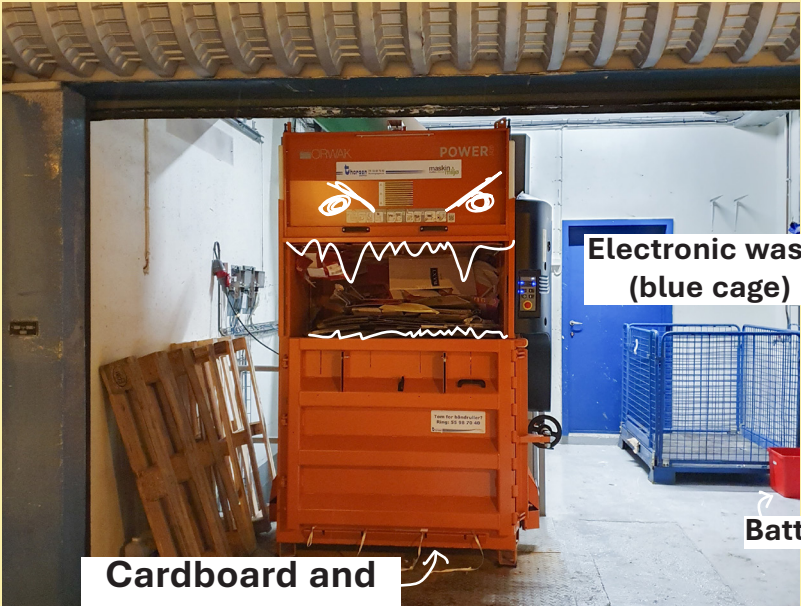
The disposal room also has a bin for food waste. Get the code from Kine-Marie if you want to use this.

The indoor garbage chute still works for smaller amounts of waste.

Type of waste	Disposal location
Cardboard and paper	Cardboard compactor in Datablokken
Electrical equipment	Blue container in the same room as the cardboard compactor
Batteries	Small, red box in cardboard room
General waste	Compactor container outside the building (lock with code)
Glass and metal	Garage door outside Bioblokken, on the side facing Bybanen



Card reader



Cardboard and paper compactor

Electronic waste (blue cage)

Batteries (red box)



Card reader



Container for general waste

**Combination
padlock**



Bin for glass and metal waste