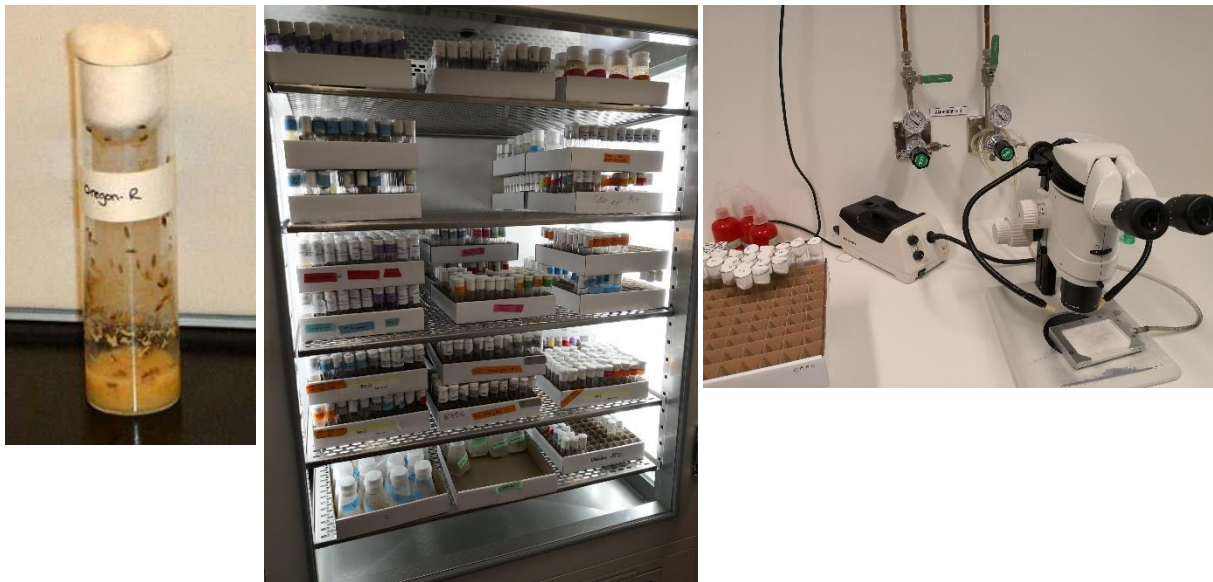


Fly Facility :



Images from the fly facility: Left to right; A tube containing fly food and all stages of fly life-cycle (embryo, larvae, pupae and adults). The food is a mix of potato, yeast and sugar; Middle, tubes of flies are stored in racks (up 100 in each) placed in incubators that run at 18 or 25°C (at 18°C the life cycle is extended by 100%, suited for stock maintenance); Right, A stereo microscope, light source and a CO₂ stage and CO₂ gas regulatory system. The CO₂ gas is dispersed very locally at low amounts, but sufficient to put the flies asleep. We can then use the scope to sort out flies, typically sorting males from females for controlled crossing later, but also looking for phenotypes/visible markers. Placing the flies back into vials, away from the CO₂ gas lets them wake up again. Not shown in picture is a portable lamp capable of exciting fluorescence to select for Green and Red fluorescent proteins GFP/RFP expression.