



Reins hjørne

Dear all MBIs,

It's been a busy time since last MBI-nytt, - hence this double-issue. I guess that many of you have been discussing the plan we have launched for forming research programmes for the department. "Group A" - the principle investigators - are already well into the process of proposing scientific themes for the programs, and in the coming weeks, the proposals will be discussed, improved and edited within group A before we decide on which ones to go for and present to our external scientific advisory board (SAB). So far, it looks very promising and pretty exciting. The SAB has been alerted and they are ready to come visit us just after New Year to discuss the plan and program proposals with us, and give us advice before we make the final decision. In parallel we have had a first meeting with "group C" - the technical and administrative staff - on how the research programmes will affect the inner workings and logistics of the department. I will also challenge the students, PhD-students, and post-docs to come up with ideas on how the new research programmes will affect our environment for training and research. Then, on November 21st, we will gather for a HMS-day to discuss our work environment in relation to the research program process - possibilities that may open up and also possible challenges. The detailed programme will be advertised later. So: we are on good track with the rolling out of our plan. For more details, see the separate column in this issue.

Last month we also celebrated two new doctors from MBI: [Naouel Gharbi](#) and [Gry Aletta Bjørlykke](#). We congratulate them and wish them all the best for their future careers. Congratulations also to their supervisors, Anders and Arnt. We can also welcome Gunhild Brubakken as the new studiekonsulent at MBI. Gunhild comes with experience from a similar job and is very eager to join our department. New to us all is also the new personnel management system for UiB:PAGA. This is a new system for all employees to learn, but the benefits are plenty as you will all get direct access to key information regarding your employment, vacations, travels, and leaves of absence. The experience from other faculties at UiB are very positive. It is imperative that each and all of you sign up with the system when it is rolled out, and that you attend one of the info.meetings that will be held later this autumn.

Last week, the Research Council's BIOTEK2021 programme granted five new large biotechnology projects, 40 MNOK each over 4 years. Although those applications where MBI were involved were not granted, two of the projects will have major components in Bergen, and we congratulate our colleagues. To all young candidates from MBI: these new projects will spur quite a lot of activity and many job opportunities. So keep an eye on the advertisement boards.

Last, but not least: credits to Christian and Mathias who appear in NatureReviews Cancer and thanks to Øyvind who has spent days and nights as leader of the trans-university consortium that applies for new, top-notch NMR instruments to form the core of a new national research infrastructure which, if funded, will take structural biology in Norway to new levels.

MBI calendar

Monday Seminars

12.30 at N-terminalen

22 October

Henriette Aksnes:
"Substrate specificity and function of the N-terminal acetyltransferase NatC"

5 November

Thomas Kalvik

Master eksamen

Onsdag 24.10

Javier Sánchez Reyes:
The study of potential hNaa30p substrates EHD1 and eIF2D in hNaa30p depleted cells
N-terminalen, 11:15

HMS-møte

November 21,

at Scandic Bergen City,
Håkonsгатen 2.

Sett av dagen!/Please reserve the date!

Mat.nat. Calendar

5 November

Horizon lecture: [Can Machines Be Creative Enough To Invent Their Own Language?](#)

18.00, Egget,
Studentsenteret

7 November

[Kvalitet i undervisningen - framtidens utfordringer.](#)
9.30-16, Auditoriet,
VilVite

Molecule of the month:
see next page!

Molecule of the Month

From the editor: Many of you will know that Arnt has skills and talent beyond molecular biology: he is also an accomplished caricature artist. Throughout his career, he has produced insightful drawings, often capturing events in the department or at the university, always with a humour, and often with a crisp satirical touch. For many years, Arnt provided us with a full review of the year per cartoons, presented with wit and complementary satire by Oddvar (now retired). To celebrate Arnt's alter ego, I have challenged him to present the Molecule of this Month. I think everyone who has worked with proteins will immediately recognise the passion and emotions that we often develop towards our tiny, molecular friends ... and foes (RAa).

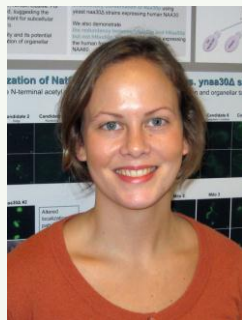
Spectrin and RACK1: "The Good, the Bad and the Ugly"

By Arnt J. Raae

RACK (Receptor for Activated C-Kinase; [uniprot:P63244](#); [pdb:4aow](#)) is a scaffolding protein which cellular function is not fully understood. The protein-protein interaction database, BIND, has more than 85 entries. In the cell it is found both in a soluble and particulate form. For example, RACK is as a ribosomal protein and is situated in the vicinity of the mRNA exit tunnel. Lately, after more than 20 years of efforts, the crystal structures of RACK from yeast, plant and humans were solved and confirms earlier models as a seven bladed β -propeller structure of WD 40 repeats. The protein is very difficult to purify as it aggregates easily. Hence, RACK1 is not always the molecular biologist's "best friend".

If RACK1 is Yin, then R16 is Yang. R16 ([uniprot:P63244](#); [pdb:1cun](#)) is the 16th repeat of the α -chain of the multi-modular, fibrous protein spectrin. Spectrin is one of the most abundant proteins in the cell and is an important part of the cytoskeleton. It cross-links actin filaments by its actin-binding domains in each end. Between the two ends is a "rod" of 17 to 21 repeated spectrin domains of which R16 is the 16th. The spectrin repeats are thought to be docking sites for a multitude of cellular components that regulates signaling processes in the cytoskeleton. R16 has served as a prominent model for many protein chemists and biophysicists (see e.g.: [pmid:22569754](#)). And, most important for the molecular biologist: R16 is stable for months by storage in the fridge.

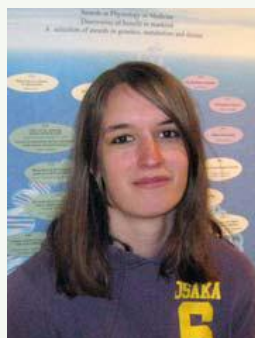




Gunhild Brubakken
førstekonsulent /
studieveileder



Øyvind Strømland
stipendiat, lab 2



Rhian Morgan
stipendiat, lab 2



Nicholas Love,
forsker, lab 5.

The research program process

Under this heading we will communicate status and updates on the process for forming research programmes at MBI.

The plan for the process to form research programmes at MBI was introduced in the *Allmøte* on September 14th.

Since then, MBIs **group A** - the principal investigators - has had one meeting discussing the first phase of the process and by October 5th, 4 draft sketches for possible research programs were received. These sketches are in different states of maturity and group A is currently in a process of editing and completing them for their first presentation within group A on a forthcoming meeting (tentatively Oct 31st). Following this meeting group A will update and edit them and discuss the details of the next steps before the proposals can be formally presented.

Group C - the technical and administrative staff - has had a first meeting discussing how the formation of the research programmes would affect the department, such as infrastructural and logistic issues that might appear.

On November 21st, we will gather for the **annual HMS-day**, - this year focussing on how the research group formation can affect the work environment.

As our **Scientific Advisory Board** was unable to take on the task to give us advice on the proposed research programmes in November (as we had planned), we have decided to shift this event to a full site visit in the second week of January. We will present the advisory board in more detail in the next issue of MBI-nytt.

Nye publikasjoner

The NAD metabolome - a key determinant of cancer cell biology Alberto Chiarugi, Christian Dölle, Roberta Felici & Mathias Ziegler, Nature Reviews Cancer, advance online publication, Published online 28 September 2012 | [doi:10.1038/nrc3340](https://doi.org/10.1038/nrc3340)

HIV-1 p6-Another viral interaction partner to the host cellular protein cyclophilin A. Solbak SM, Reksten TR, Röder R, Wray V, Horvli O, Raae AJ, Henklein P, Henklein P, Fossen T. (2012) [Biochim Biophys Acta. Apr;1824\(4\):667-78](https://doi.org/10.1016/j.bba.2012.02.009). Epub 2012 Feb 9

Thermal stability of chicken brain α -spectrin repeat 17: a spectroscopic study. Annette K. Brenner, Bruno Kieffer, Gilles Trave', Nils Aage Frøystein and Arnt J. Raae (2012) [Biomol NMR \(2012\) 53:71-83](https://doi.org/10.1016/j.bmr.2012.09.010)

Cloning, expression and purification of Atlantic salmon (*Salmo salar*, L.) neuroglobin. Bjørlykke GA, Kvamme BO, Slinde E, Raae AJ. Protein Expr Purif. 2012 Oct 4. pii: S1046-5928(12)00259-8. [doi: 10.1016/j.jep.2012.09.010](https://doi.org/10.1016/j.jep.2012.09.010). [Epub ahead of print]



**Christopher Florian
Holte** Lab 6



Sepideh Mostafavi
Lab 6



Rasmus Moen Ree
Lab 4/6



Ingvoll Tolås
Lab 3



**Helene Heitmann
Sandnes**, lab 2

Personalnytt

Studiekonsulent

Gunhild Brubakken begynte 15. oktober i fast stilling som førstekonsulent/studieveileder etter Marielle Hauge. Vanja Haugland som har vikariert i stillingen avslutter sitt engasjement ved instituttet 19. oktober. Hjertelig takk til Vanja som har hoppet inn i arbeidsoppgavene med stor entusiasme.

Stipendiater

Vi er hoppende glade for 3 nye universitetsstipendiater (4-årige stillinger):

Øyvind Strømmand hos Øyvind Halskau, lab 2 fra 22. oktober.

Rhian Morgan hos Aurelia Lewis, Lab 2 fra 8. oktober

Sylvia Varland hos Thomas Arnesen, lab 4 fra 1. oktober. Sylvia vil være plass ved MBI fra 5. november, bilde følger i neste nummer.

Forsker

Nicholas Love er tilsatt i et 3 måneders engasjement som forsker på et NFR-prosjekt hos Mathias Ziegler (lab 5).

Gjestestudenter

Erasmus Student Charlotte Vandermeulen på lab 5 høst 2012 og vår 2013

Gjestestudent Lisa Zimmermann på lab 5 i 3 måneder ut desember 2012

Masterstudenter på labene

Denne gangen har vi også klart å ta bilde av de nye masterstudentene som ble presentert i sist nummer!

Nytt webbasert system for lønns- og personalrelaterte saker/

New web-based system for salary and personal related affairs

UiB er i ferd med å innføre den webbaserte delen av lønns- og personalsystemet, PagaWeb. Det innebærer ingen endring i hva ansatte skal informere eller søke arbeidsgiver om, men er den nye måten informasjonen skal leveres på til arbeidsgiver.

Fra 1. desember vil ansatte på Det matematisk-naturvitenskapelige fakultet bli gitt:

- Innsikt i egen mappe med lønns- og personalrelaterte opplysninger om seg selv
- Tilgang for å levere reiseregninger, fraværsmeldinger og permisjonssøknader elektronisk til arbeidsgiver og følge saksflyten.

Alle ansatte skal bruke PagaWeb til følgende:

- Sjekke egen lønnsslipp og registrerte opplysninger om seg selv (lønnsslippen vil ikke lenger sendes ut i papirform)
- Oppdatere person- og familieinformasjon



**Charlotte
Vandermeulen,**
Erasmus student lab 5



Lisa Zimmermann,
gjestestudent lab 5

- Registrere fravær (egenmeldinger, barns sykdom og velferdspermisjon)
- Søke om permisjoner (foreldre, omsorg, ulønnet)
- Registrere reiseregninger
- Registrere refusjon av utlegg som krever lønnsinnberetning

Fra 2013 skal også ferie registreres i PagaWeb

Det vil bli arrangert en rekke opplærings- og informasjonsmøter i november. Det er viktig at alle ansatte stiller på **ett** av disse møtene.

Sted: Egget på Studentsenteret

Tidspunkt:

- 13. november kl. 10.00-12.00 og 13.00-15.00
- 15. november kl. 10.00-12.00 og 13.00-15.00
- 20. november kl. 10.00-12.00. På engelsk: kl. 13.00-15.00
- 23. november på engelsk: kl. 10.00-12.00

Les mer på PAGAweb.bloggen.

UiB is introducing the web based part of the salary and personal system, PagaWeb, providing a new way for the employees to communicate with the employer regarding personal information and applications for leaves.

From 1 December all employees at the Faculty of Mathematics and Natural Sciences will be given:

- Insight in their own personal file: salary and person related information about themselves.
- Access to deliver travel reimbursement forms, messages about absence and applications for leaves electronically to the employer and follow the handling of the case.

PagaWeb should be used by all employees for the following:

- Check your salary note and register information about yourself (UiB will stop sending the salary notes by surface mail)
- Update personal and family information
- Register absence (own sickness without doctor's note, own child's sickness, welfare leave)
- Apply for leaves (parent, care, unpaid)
- Register travel reimbursement claims
- Register certain other reimbursement claims demanding
- From 2013 registering vacation

There will be a number of instruction- and information meetings in November. Please make sure to attend **one** of these (two meetings: 20 and 23 November, are in English).

Place: The auditorium Egget in the Student Centre

Time:

- 13 November 10-12 and 13 -15
- 15 November 10-12 and 13-15
- 20 November 10-12 In English: 13-15
- 23 November In English: 10-12

Read more on the PAGAweb.blog.