

## Research cruise 2009 – August 4 - Pictures



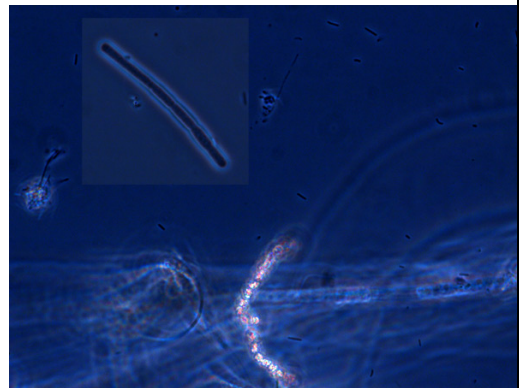
Could be from a cruise around Greece!!



Probing Loki's Castle.

We used the vacuume to take a sample of the bacteria mats.

Ida and her team made some nice microscope pictures of sulphur oxidising bacteria.





Midnight sun!

(it doesn't even sink below the horizon before rising again)



Jan Byrn and Captain Preben Vindenes talk about the transducer problem for the Discovery team.

(the transducer makes it possible to "see" the position of the ROV in relation to the ship)



Rolf is making some adjustments to the titanium thermometer for the ROV.