

Research cruise 2009 – August 5 - Pictures



There is blue sky somewhere!!

The Captain estimates visibility today at 50m!



Geologists and biologists meet to look at the haul from the rock dredge.



Marvin and Gretchen assemble the special containers for collecting vent fluids.

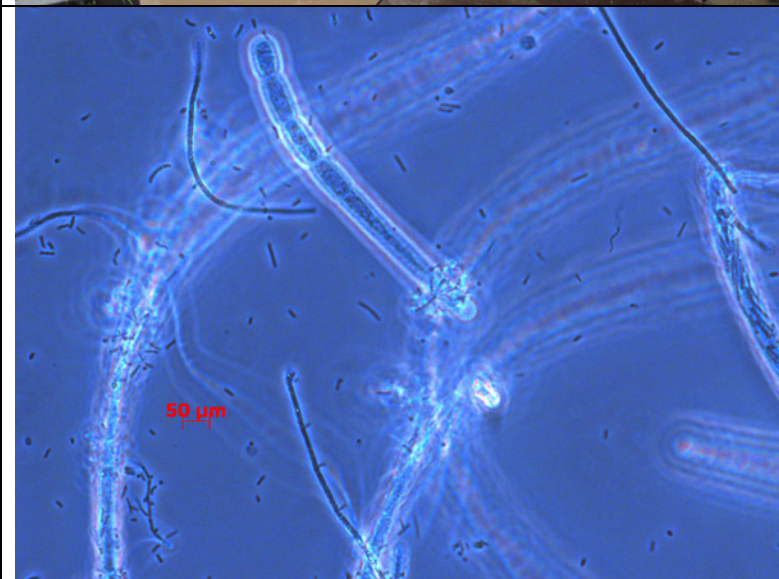


The rock collection washed up!

Notice how glassy the samples look. They actually are glass – lava – complete with edges sharp enough to cut.



Stig and Ingunn start washing the muddy rocks.



Some of the sulphur oxidising bacteria from the bacteria mats on Loki's Castle tower, as seen under the microscope.