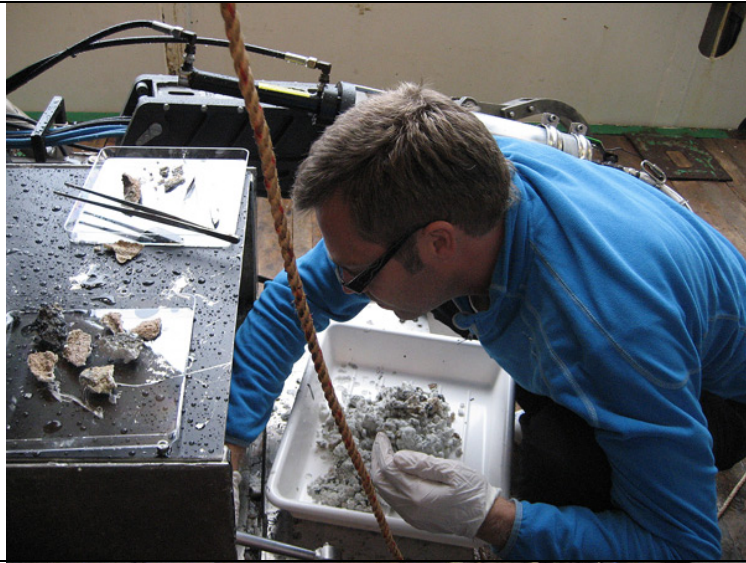


Research cruise 2009 – August 8 - Pictures



Hans Tore looking through the ROV drawer sample



Hans Tore is sorting the vent fauna collected by the ROV.



Ingunn looking at the chimney pieces.



Solveig H extracting samples for microbiology from the chimney debris.



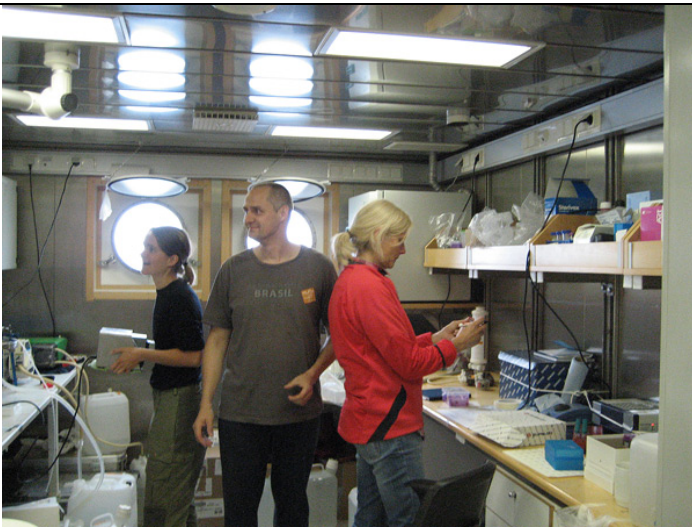
Solveig T. is extracting DNA from microbiology samples.



Salveign H, Stig, Gretchen and Ingunn working on the cores from the hydrothermal sediments.



Hydrothermal sediments – brittle, gritty and black!



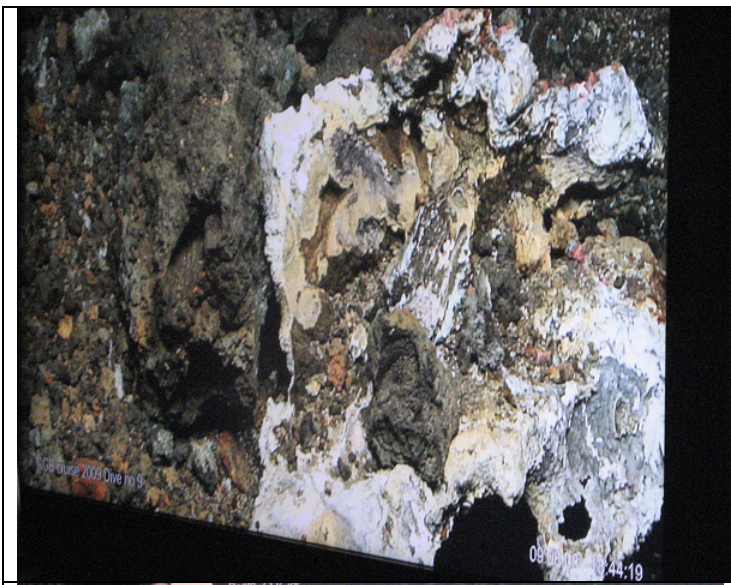
The filtering team: Hilde, Bernt and Solveig T helping!



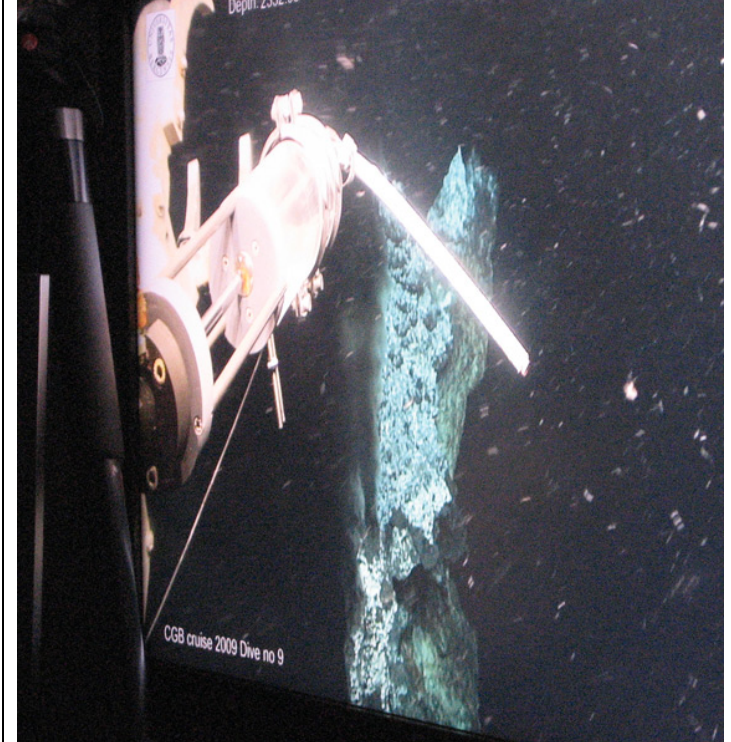
The filtering apparatus – 60 litres per sample, reduced to maybe 50ml!



Solveig H working up microbiology samples for more analysis on land – after 4 nights on night duty!!



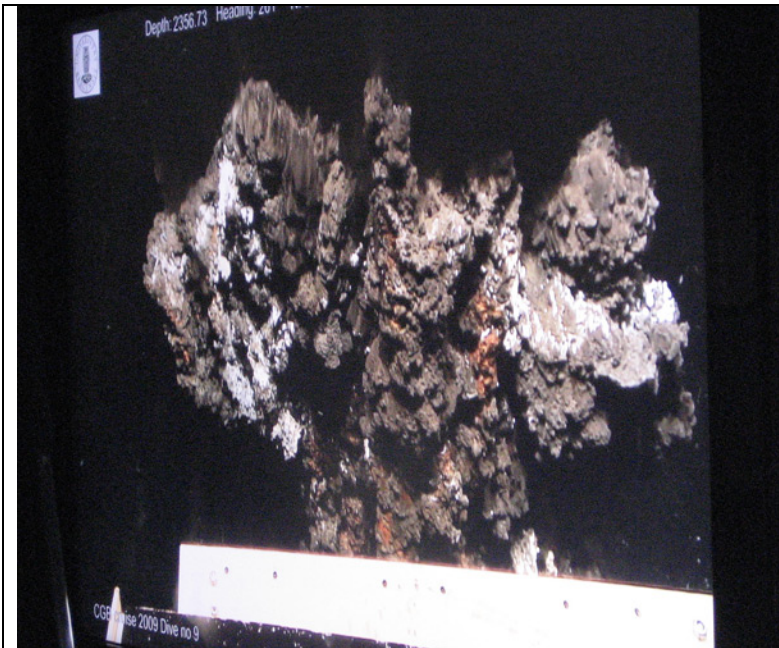
Inside a recently fallen chimney



Taking the temperature of a vent



Two artificial wood falls to see what settles



Taking a chimney piece ...